

# Community Reinvestment Act (CRA)

## Ameriprise Bank, FSB Public File

Under the CRA, the following information must be maintained in a public file, current as of April 1 of each year.

- All public comments received for the current year and the prior three calendar years. (See Exhibit D)
- A copy of the Public Evaluation of the bank's most recent CRA Performance Evaluation. [CRA Evaluation Charter No. \(718164\) \(occ.gov\)](#)
- List of branch locations and branch servicing information including hours of operation. (See Exhibit A)
- Branches opened or closed by the bank during the prior three calendar years, branches opened and closed. (See Exhibit A)
- A description of Personal Products & Services and Business Products & Services, available through Ameriprise Bank, FSB. [Cash, cards & lending | Ameriprise Financial](#)
- The Ameriprise Bank, Facility Based Assessment Area (FBAA) represents the communities we serve. A map (Exhibit B) and individual tract lists (Exhibit C) can be viewed below.
- The Ameriprise Bank CRA Disclosure Statement for the prior three calendar years. [FFIEC CRA Disclosure Report](#)

Institution Name: Ameriprise Bank, FSB    Respondent ID:718164

Ameriprise Bank, FSB is not currently a residential mortgage lender of record; all mortgage loans are originated through our national referral origination partnership. Therefore, Ameriprise Bank, FSB is not currently subject to reporting under the Home Mortgage Disclosure Act (HMDA) and a HMDA Disclosure Statement has not been prepared for the FSB during the prior three calendar years.

Ameriprise Bank, FSB is able to provide printed copies of these documents; however, please note we may charge a reasonable fee to cover copying and mailing expenses. To request printed copies of documents, please contact the CRA Program Office at the address on the bottom of this page.

Any comments or questions about this portion of the Ameriprise Bank website, or CRA performance, may be addressed to:

Mr. Bill Sarvela, Director-Community Reinvestment Act  
Ameriprise Bank FSB  
707 2<sup>nd</sup> Avenue South  
Minneapolis, MN 55402  
[William.sarvela@ampf.com](mailto:William.sarvela@ampf.com)

## Exhibit A: Branch Information

Location: 901 3<sup>rd</sup> Avenue South, Minneapolis, MN 55402

Date Opened: May 6, 2019

Phone: 1-800-461-1726

Type: On-line only

ATM: No

Lobby Hours: NA

Drive-Thru Hours: NA

Info below pulled from: [FRB Census Geocoder \(ffiec.gov\)](https://ffiec.gov)

Address: 901 3rd Ave S, Minneapolis, Minnesota, 55402

MSA: 33460 - MINNEAPOLIS-ST. PAUL-BLOOMINGTON, MN-WI

State: 27 - MINNESOTA

County: 053 - HENNEPIN COUNTY

Tract Code: 1044.00

### Summary Census Demographic Information

|   |           |
|---|-----------|
| Tract Income Level  | Upper     |
| Underserved or Distressed Tract                             | No        |
| 2023 FFIEC Estimated MSA/MD/non-MSA/MD Median Family Income | \$124,300 |
| 2023 Estimated Tract Median Family Income                   | \$149,595 |
| 2020 Tract Median Family Income                             | \$125,139 |
| Tract Median Family Income %                                | 120.35    |
| Tract Population  | 2576      |
| Tract Minority %  | 49.57     |
| Tract Minority Population                                   | 1277      |
| Owner-Occupied Units  | 119       |
| 1- to 4- Family Units                                       | 54        |

### **Branches Opened/Closed**

2021-None

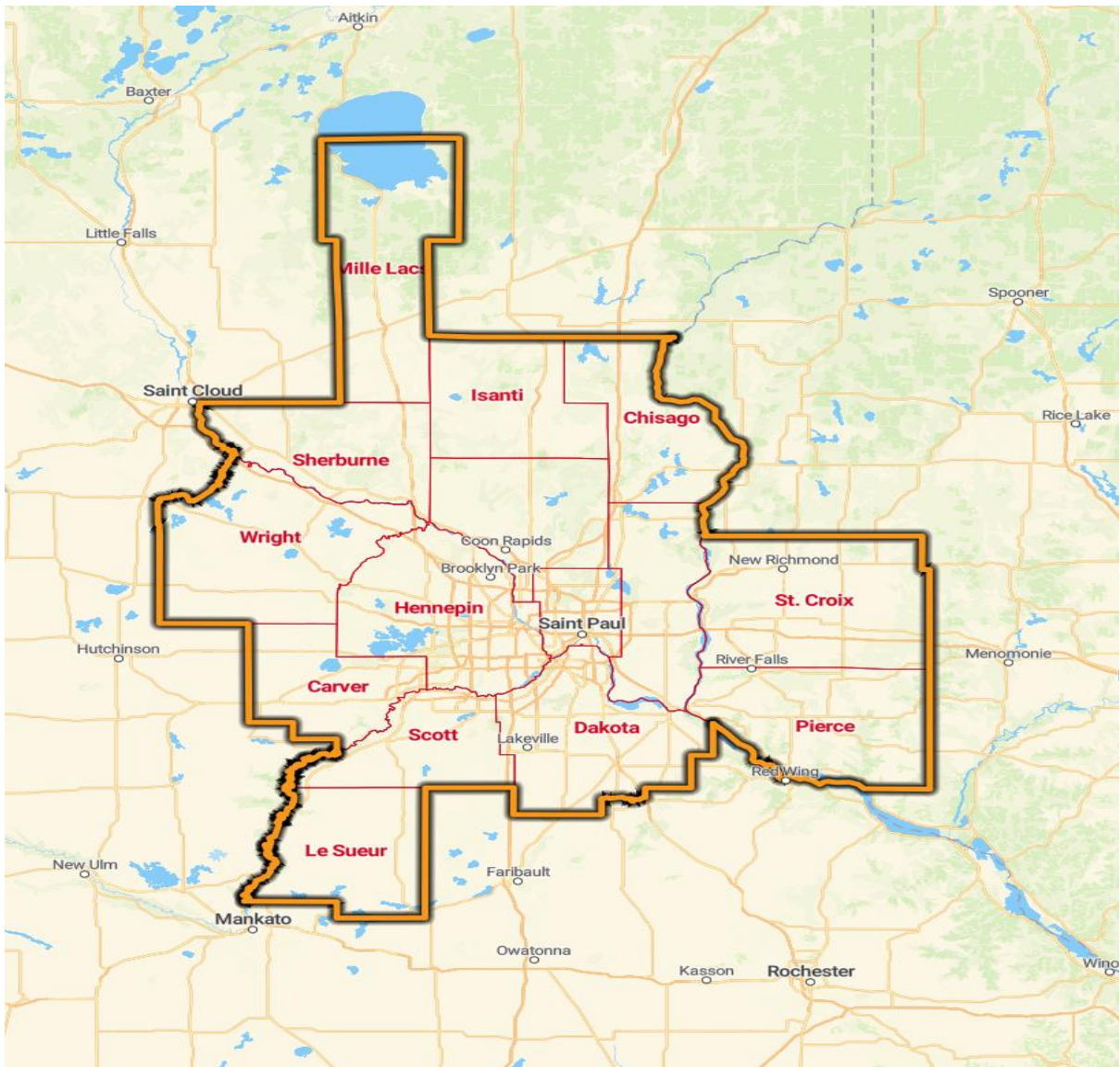
2022-None

2023-None

2024 Q1-None

2024 Q2-None

Exhibit B: MAP-FBAA-33460-Minneapolis-St. Paul-Bloomington-WI



| <u>County Name</u>          | <u>County Code</u> |
|-----------------------------|--------------------|
| 1) Mille Lacs County        | (095)              |
| 2) Sherburne County         | (141)              |
| 3) Isanti County            | (059)              |
| 4) Wright County            | (171)              |
| 5) Carver County            | (019)              |
| 6) Le Sueur County          | (079)              |
| 7) Anoka County             | (003)              |
| 8) Hennepin County          | (053)              |
| 9) Scott County             | (139)              |
| 10) Chisago County          | (025)              |
| 11) Ramsey County           | (123)              |
| 12) Washington County       | (163)              |
| 13) Dakota County           | (037)              |
| 14) Saint Croix (WI) County | (109)              |
| 15) Pierce (WI) County      | (093)              |

Exhibit C: 2024 Ameriprise Bank Facility Based Assessment Area (FBAA)

| Exhibit C: 2024 Ameriprise Bank Facility Base Assessment Area (FBAA) |       |        |              |             |          |                |              |                |             |
|--|-------|--------|--------------|-------------|----------|----------------|--------------|----------------|-------------|
| State  | MSA   | County | Census Tract | Town        | Zip Code | Minority Level | Income Level | Percent Median | Tract_11    |
| 27   | 33460 | 3      | 501.07       | St. Francis | 55070    | <10%           | N/A          | 0              | 27003050107 |
| 27   | 33460 | 3      | 501.08       | St. Francis | 55070    | 10% - <20%     | N/A          | 0              | 27003050108 |
| 27   | 33460 | 3      | 501.09       | East Bethel | 55005    | 10% - <20%     | N/A          | 0              | 27003050109 |
| 27   | 33460 | 3      | 501.1        | East Bethel | 55011    | 10% - <20%     | N/A          | 0              | 27003050110 |
| 27   | 33460 | 3      | 501.11       | East Bethel | 55011    | <10%           | N/A          | 0              | 27003050111 |
| 27   | 33460 | 3      | 501.14       | Oak Grove   | 55303    | 10% - <20%     | N/A          | 0              | 27003050114 |
| 27   | 33460 | 3      | 501.15       | Oak Grove   | 55011    | 10% - <20%     | N/A          | 0              | 27003050115 |
| 27   | 33460 | 3      | 501.16       | Burns       | 55330    | <10%           | N/A          | 0              | 27003050116 |
| 27   | 33460 | 3      | 502.08       | Andover     | 55304    | 10% - <20%     | N/A          | 0              | 27003050208 |
| 27   | 33460 | 3      | 502.1        | Columbus    | 55025    | 10% - <20%     | N/A          | 0              | 27003050210 |
| 27   | 33460 | 3      | 502.15       | Ham Lake    | 55304    | 10% - <20%     | N/A          | 0              | 27003050215 |
| 27   | 33460 | 3      | 502.16       | Ham Lake    | 55304    | 10% - <20%     | N/A          | 0              | 27003050216 |
| 27   | 33460 | 3      | 502.17       | Andover     | 55304    | 10% - <20%     | N/A          | 0              | 27003050217 |
| 27   | 33460 | 3      | 502.18       | Andover     | 55304    | 10% - <20%     | N/A          | 0              | 27003050218 |
| 27   | 33460 | 3      | 502.19       | Andover     | 55304    | 10% - <20%     | N/A          | 0              | 27003050219 |
| 27   | 33460 | 3      | 502.2        | Andover     | 55304    | 10% - <20%     | N/A          | 0              | 27003050220 |
| 27   | 33460 | 3      | 502.22       | Andover     | 55304    | 10% - <20%     | N/A          | 0              | 27003050222 |
| 27   | 33460 | 3      | 502.23       | Ramsey      | 55303    | 10% - <20%     | N/A          | 0              | 27003050223 |
| 27   | 33460 | 3      | 502.24       | Ramsey      | 55303    | 10% - <20%     | N/A          | 0              | 27003050224 |
| 27   | 33460 | 3      | 502.26       | Ramsey      | 55303    | 10% - <20%     | N/A          | 0              | 27003050226 |
| 27   | 33460 | 3      | 502.27       | Ramsey      | 55303    | 10% - <20%     | N/A          | 0              | 27003050227 |
| 27   | 33460 | 3      | 502.28       | Ramsey      | 55303    | 20% - <50%     | N/A          | 0              | 27003050228 |
| 27   | 33460 | 3      | 502.29       | Lino Lakes  | 55014    | 20% - <50%     | N/A          | 0              | 27003050229 |
| 27   | 33460 | 3      | 502.3        | Lino Lakes  | 55038    | 10% - <20%     | N/A          | 0              | 27003050230 |
| 27   | 33460 | 3      | 502.32       | Centerville | 55038    | 10% - <20%     | N/A          | 0              | 27003050232 |
| 27   | 33460 | 3      | 502.33       | Lino Lakes  | 55014    | 10% - <20%     | N/A          | 0              | 27003050233 |
| 27   | 33460 | 3      | 502.34       | Ham Lake    | 55304    | <10%           | N/A          | 0              | 27003050234 |
| 27   | 33460 | 3      | 502.35       | Ham Lake    | 55304    | 10% - <20%     | N/A          | 0              | 27003050235 |
| 27   | 33460 | 3      | 502.36       | Lino Lakes  | 55038    | <10%           | N/A          | 0              | 27003050236 |
| 27   | 33460 | 3      | 502.37       | Lino Lakes  | 55014    | 10% - <20%     | N/A          | 0              | 27003050237 |
| 27   | 33460 | 3      | 502.38       | Andover     | 55304    | 10% - <20%     | N/A          | 0              | 27003050238 |
| 27   | 33460 | 3      | 502.39       | Andover     | 55304    | 10% - <20%     | N/A          | 0              | 27003050239 |
| 27   | 33460 | 3      | 502.4        | Ramsey      | 55303    | 10% - <20%     | N/A          | 0              | 27003050240 |
| 27   | 33460 | 3      | 502.41       | Ramsey      | 55303    | 10% - <20%     | N/A          | 0              | 27003050241 |
| 27   | 33460 | 3      | 504.01       | Anoka       | 55303    | 20% - <50%     | N/A          | 0              | 27003050401 |
| 27   | 33460 | 3      | 504.02       | Anoka       | 55303    | 10% - <20%     | N/A          | 0              | 27003050402 |
| 27   | 33460 | 3      | 505.01       | Anoka       | 55303    | 10% - <20%     | N/A          | 0              | 27003050501 |
| 27   | 33460 | 3      | 505.04       | Anoka       | 55303    | 20% - <50%     | N/A          | 0              | 27003050504 |
| 27   | 33460 | 3      | 505.05       | Anoka       | 55303    | 20% - <50%     | N/A          | 0              | 27003050505 |
| 27   | 33460 | 3      | 506.02       | Coon Rapids | 55433    | 20% - <50%     | N/A          | 0              | 27003050602 |
| 27   | 33460 | 3      | 506.05       | Coon Rapids | 55433    | 20% - <50%     | N/A          | 0              | 27003050605 |

|    |       |   |        |                  |       |            |     |   |             |
|----|-------|---|--------|------------------|-------|------------|-----|---|-------------|
| 27 | 33460 | 3 | 506.06 | Coon Rapids      | 55433 | 20% - <50% | N/A | 0 | 27003050606 |
| 27 | 33460 | 3 | 506.07 | Coon Rapids      | 55433 | 20% - <50% | N/A | 0 | 27003050607 |
| 27 | 33460 | 3 | 506.08 | Coon Rapids      | 55433 | 20% - <50% | N/A | 0 | 27003050608 |
| 27 | 33460 | 3 | 506.09 | Coon Rapids      | 55448 | 20% - <50% | N/A | 0 | 27003050609 |
| 27 | 33460 | 3 | 506.11 | Coon Rapids      | 55433 | 20% - <50% | N/A | 0 | 27003050611 |
| 27 | 33460 | 3 | 506.12 | Coon Rapids      | 55433 | 20% - <50% | N/A | 0 | 27003050612 |
| 27 | 33460 | 3 | 507.02 | Coon Rapids      | 55448 | 20% - <50% | N/A | 0 | 27003050702 |
| 27 | 33460 | 3 | 507.04 | Coon Rapids      | 55448 | 20% - <50% | N/A | 0 | 27003050704 |
| 27 | 33460 | 3 | 507.06 | Coon Rapids      | 55448 | 20% - <50% | N/A | 0 | 27003050706 |
| 27 | 33460 | 3 | 507.07 | Coon Rapids      | 55448 | 20% - <50% | N/A | 0 | 27003050707 |
| 27 | 33460 | 3 | 507.09 | Coon Rapids      | 55433 | 20% - <50% | N/A | 0 | 27003050709 |
| 27 | 33460 | 3 | 507.1  | Coon Rapids      | 55433 | 20% - <50% | N/A | 0 | 27003050710 |
| 27 | 33460 | 3 | 507.11 | Coon Rapids      | 55448 | 20% - <50% | N/A | 0 | 27003050711 |
| 27 | 33460 | 3 | 507.12 | Coon Rapids      | 55448 | 20% - <50% | N/A | 0 | 27003050712 |
| 27 | 33460 | 3 | 508.07 | Blaine           | 55434 | 20% - <50% | N/A | 0 | 27003050807 |
| 27 | 33460 | 3 | 508.08 | Blaine           | 55434 | 20% - <50% | N/A | 0 | 27003050808 |
| 27 | 33460 | 3 | 508.1  | Blaine           | 55434 | 20% - <50% | N/A | 0 | 27003050810 |
| 27 | 33460 | 3 | 508.11 | Blaine           | 55434 | 20% - <50% | N/A | 0 | 27003050811 |
| 27 | 33460 | 3 | 508.16 | Blaine           | 55014 | 20% - <50% | N/A | 0 | 27003050816 |
| 27 | 33460 | 3 | 508.18 | Blaine           | 55449 | 20% - <50% | N/A | 0 | 27003050818 |
| 27 | 33460 | 3 | 508.19 | Blaine           | 55449 | 20% - <50% | N/A | 0 | 27003050819 |
| 27 | 33460 | 3 | 508.2  | Blaine           | 55449 | 20% - <50% | N/A | 0 | 27003050820 |
| 27 | 33460 | 3 | 508.21 | Blaine           | 55449 | 20% - <50% | N/A | 0 | 27003050821 |
| 27 | 33460 | 3 | 508.22 | Blaine           | 55449 | 20% - <50% | N/A | 0 | 27003050822 |
| 27 | 33460 | 3 | 508.23 | Blaine           | 55434 | 20% - <50% | N/A | 0 | 27003050823 |
| 27 | 33460 | 3 | 508.24 | Blaine           | 55434 | 20% - <50% | N/A | 0 | 27003050824 |
| 27 | 33460 | 3 | 508.25 | Blaine           | 55434 | 20% - <50% | N/A | 0 | 27003050825 |
| 27 | 33460 | 3 | 508.26 | Blaine           | 55434 | 20% - <50% | N/A | 0 | 27003050826 |
| 27 | 33460 | 3 | 508.27 | Blaine           | 55434 | 20% - <50% | N/A | 0 | 27003050827 |
| 27 | 33460 | 3 | 508.28 | Blaine           | 55014 | 20% - <50% | N/A | 0 | 27003050828 |
| 27 | 33460 | 3 | 508.29 | Blaine           | 55449 | 20% - <50% | N/A | 0 | 27003050829 |
| 27 | 33460 | 3 | 509.01 | Lexington        | 55014 | 20% - <50% | N/A | 0 | 27003050901 |
| 27 | 33460 | 3 | 509.02 | Circle Pines     | 55014 | 10% - <20% | N/A | 0 | 27003050902 |
| 27 | 33460 | 3 | 510.01 | Spring Lake Park | 55432 | 20% - <50% | N/A | 0 | 27003051001 |
| 27 | 33460 | 3 | 510.02 | Spring Lake Park | 55432 | 20% - <50% | N/A | 0 | 27003051002 |
| 27 | 33460 | 3 | 511.01 | Fridley          | 55432 | 20% - <50% | N/A | 0 | 27003051101 |
| 27 | 33460 | 3 | 511.02 | Fridley          | 55432 | 20% - <50% | N/A | 0 | 27003051102 |
| 27 | 33460 | 3 | 511.03 | Fridley          | 55432 | 50% - <80% | N/A | 0 | 27003051103 |
| 27 | 33460 | 3 | 512.01 | Fridley          | 55432 | 50% - <80% | N/A | 0 | 27003051201 |
| 27 | 33460 | 3 | 512.02 | Fridley          | 55432 | 20% - <50% | N/A | 0 | 27003051202 |
| 27 | 33460 | 3 | 512.03 | Fridley          | 55432 | 20% - <50% | N/A | 0 | 27003051203 |
| 27 | 33460 | 3 | 512.06 | Fridley          | 55421 | 20% - <50% | N/A | 0 | 27003051206 |
| 27 | 33460 | 3 | 513.02 | Columbia Heights | 55421 | 20% - <50% | N/A | 0 | 27003051302 |
| 27 | 33460 | 3 | 513.04 | Columbia Heights | 55421 | 20% - <50% | N/A | 0 | 27003051304 |
| 27 | 33460 | 3 | 513.05 | Columbia Heights | 55421 | 50% - <80% | N/A | 0 | 27003051305 |
| 27 | 33460 | 3 | 514    | Columbia Heights | 55421 | 50% - <80% | N/A | 0 | 27003051400 |
| 27 | 33460 | 3 | 515.01 | Columbia Heights | 55421 | 50% - <80% | N/A | 0 | 27003051501 |
| 27 | 33460 | 3 | 515.02 | Columbia Heights | 55421 | 20% - <50% | N/A | 0 | 27003051502 |

|    |       |    |         |                |       |            |     |   |             |
|----|-------|----|---------|----------------|-------|------------|-----|---|-------------|
| 27 | 33460 | 3  | 516     | Linwood        | 55079 | <10%       | N/A | 0 | 27003051600 |
| 27 | 33460 | 19 | 901.01  | Watertown      | 55388 | <10%       | N/A | 0 | 27019090101 |
| 27 | 33460 | 19 | 901.02  | Watertown      | 55388 | <10%       | N/A | 0 | 27019090102 |
| 27 | 33460 | 19 | 902     | Camden         | 55367 | <10%       | N/A | 0 | 27019090200 |
| 27 | 33460 | 19 | 903.02  | Waconia        | 55387 | 10% - <20% | N/A | 0 | 27019090302 |
| 27 | 33460 | 19 | 903.03  | Waconia        | 55387 | <10%       | N/A | 0 | 27019090303 |
| 27 | 33460 | 19 | 903.04  | Waconia        | 55387 | <10%       | N/A | 0 | 27019090304 |
| 27 | 33460 | 19 | 904.01  | Laketown       | 55387 | 10% - <20% | N/A | 0 | 27019090401 |
| 27 | 33460 | 19 | 904.02  | Victoria       | 55386 | <10%       | N/A | 0 | 27019090402 |
| 27 | 33460 | 19 | 905.01  | Chanhassen     | 55331 | 10% - <20% | N/A | 0 | 27019090501 |
| 27 | 33460 | 19 | 905.02  | Chanhassen     | 55317 | 10% - <20% | N/A | 0 | 27019090502 |
| 27 | 33460 | 19 | 905.03  | Chanhassen     | 55317 | 10% - <20% | N/A | 0 | 27019090503 |
| 27 | 33460 | 19 | 906.01  | Chanhassen     | 55317 | 10% - <20% | N/A | 0 | 27019090601 |
| 27 | 33460 | 19 | 906.02  | Chanhassen     | 55317 | 10% - <20% | N/A | 0 | 27019090602 |
| 27 | 33460 | 19 | 907.02  | Chanhassen     | 55318 | 20% - <50% | N/A | 0 | 27019090702 |
| 27 | 33460 | 19 | 907.03  | Chanhassen     | 55317 | 10% - <20% | N/A | 0 | 27019090703 |
| 27 | 33460 | 19 | 907.04  | Chanhassen     | 55317 | 10% - <20% | N/A | 0 | 27019090704 |
| 27 | 33460 | 19 | 908.01  | Chaska         | 55318 | 20% - <50% | N/A | 0 | 27019090801 |
| 27 | 33460 | 19 | 908.02  | Chaska         | 55318 | 10% - <20% | N/A | 0 | 27019090802 |
| 27 | 33460 | 19 | 909.01  | Chaska         | 55318 | 20% - <50% | N/A | 0 | 27019090901 |
| 27 | 33460 | 19 | 909.02  | Chaska         | 55318 | 10% - <20% | N/A | 0 | 27019090902 |
| 27 | 33460 | 19 | 910.01  | Chaska         | 55318 | 20% - <50% | N/A | 0 | 27019091001 |
| 27 | 33460 | 19 | 910.02  | Chaska         | 55318 | 10% - <20% | N/A | 0 | 27019091002 |
| 27 | 33460 | 19 | 911     | Dahlgren       | 55322 | 10% - <20% | N/A | 0 | 27019091100 |
| 27 | 33460 | 19 | 912.01  | Young America  | 55368 | <10%       | N/A | 0 | 27019091201 |
| 27 | 33460 | 19 | 912.02  | Benton         | 55322 | <10%       | N/A | 0 | 27019091202 |
| 27 | 33460 | 25 | 1101    | Fish Lake      | 55032 | <10%       | N/A | 0 | 27025110100 |
| 27 | 33460 | 25 | 1102.01 | Rushseba       | 55069 | 20% - <50% | N/A | 0 | 27025110201 |
| 27 | 33460 | 25 | 1102.02 | Sunrise        | 55032 | <10%       | N/A | 0 | 27025110202 |
| 27 | 33460 | 25 | 1103.01 | Branch         | 55056 | 10% - <20% | N/A | 0 | 27025110301 |
| 27 | 33460 | 25 | 1103.02 | Branch         | 55056 | 10% - <20% | N/A | 0 | 27025110302 |
| 27 | 33460 | 25 | 1104.02 | Lent           | 55079 | 10% - <20% | N/A | 0 | 27025110402 |
| 27 | 33460 | 25 | 1104.03 | Wyoming        | 55013 | <10%       | N/A | 0 | 27025110403 |
| 27 | 33460 | 25 | 1104.04 | Wyoming        | 55092 | 10% - <20% | N/A | 0 | 27025110404 |
| 27 | 33460 | 25 | 1105.01 | Chisago Lake   | 55045 | <10%       | N/A | 0 | 27025110501 |
| 27 | 33460 | 25 | 1105.03 | Chisago Lake   | 55045 | <10%       | N/A | 0 | 27025110503 |
| 27 | 33460 | 25 | 1105.04 | Wyoming        | 55013 | <10%       | N/A | 0 | 27025110504 |
| 27 | 33460 | 25 | 1106    | Chisago Lake   | 55012 | <10%       | N/A | 0 | 27025110600 |
| 27 | 33460 | 25 | 1107    | Shafer         | 55084 | <10%       | N/A | 0 | 27025110700 |
| 27 | 33460 | 37 | 601.01  | West St. Paul  | 55118 | 20% - <50% | N/A | 0 | 27037060101 |
| 27 | 33460 | 37 | 601.02  | West St. Paul  | 55118 | 20% - <50% | N/A | 0 | 27037060102 |
| 27 | 33460 | 37 | 601.03  | West St. Paul  | 55118 | 10% - <20% | N/A | 0 | 27037060103 |
| 27 | 33460 | 37 | 601.04  | West St. Paul  | 55118 | 20% - <50% | N/A | 0 | 27037060104 |
| 27 | 33460 | 37 | 601.05  | West St. Paul  | 55118 | 20% - <50% | N/A | 0 | 27037060105 |
| 27 | 33460 | 37 | 602.01  | South St. Paul | 55075 | 20% - <50% | N/A | 0 | 27037060201 |
| 27 | 33460 | 37 | 602.02  | South St. Paul | 55075 | 20% - <50% | N/A | 0 | 27037060202 |
| 27 | 33460 | 37 | 603.01  | South St. Paul | 55075 | 20% - <50% | N/A | 0 | 27037060301 |
| 27 | 33460 | 37 | 603.02  | South St. Paul | 55075 | 20% - <50% | N/A | 0 | 27037060302 |

|    |       |    |        |                     |       |            |     |   |             |
|----|-------|----|--------|---------------------|-------|------------|-----|---|-------------|
| 27 | 33460 | 37 | 604.01 | South St. Paul      | 55075 | 20% - <50% | N/A | 0 | 27037060401 |
| 27 | 33460 | 37 | 604.02 | South St. Paul      | 55075 | 20% - <50% | N/A | 0 | 27037060402 |
| 27 | 33460 | 37 | 605.02 | Inver Grove Heights | 55076 | 20% - <50% | N/A | 0 | 27037060502 |
| 27 | 33460 | 37 | 605.03 | Inver Grove Heights | 55076 | 20% - <50% | N/A | 0 | 27037060503 |
| 27 | 33460 | 37 | 605.05 | Inver Grove Heights | 55077 | 20% - <50% | N/A | 0 | 27037060505 |
| 27 | 33460 | 37 | 605.06 | Inver Grove Heights | 55076 | 20% - <50% | N/A | 0 | 27037060506 |
| 27 | 33460 | 37 | 605.07 | Inver Grove Heights | 55076 | 20% - <50% | N/A | 0 | 27037060507 |
| 27 | 33460 | 37 | 605.08 | Inver Grove Heights | 55077 | 20% - <50% | N/A | 0 | 27037060508 |
| 27 | 33460 | 37 | 605.09 | Inver Grove Heights | 55076 | 20% - <50% | N/A | 0 | 27037060509 |
| 27 | 33460 | 37 | 606.03 | Mendota Heights     | 55118 | 10% - <20% | N/A | 0 | 27037060603 |
| 27 | 33460 | 37 | 606.04 | Mendota Heights     | 55118 | <10%       | N/A | 0 | 27037060604 |
| 27 | 33460 | 37 | 606.05 | Mendota Heights     | 55120 | 20% - <50% | N/A | 0 | 27037060605 |
| 27 | 33460 | 37 | 606.06 | Mendota Heights     | 55120 | 10% - <20% | N/A | 0 | 27037060606 |
| 27 | 33460 | 37 | 607.09 | Burnsville          | 55337 | 20% - <50% | N/A | 0 | 27037060709 |
| 27 | 33460 | 37 | 607.1  | Burnsville          | 55337 | 50% - <80% | N/A | 0 | 27037060710 |
| 27 | 33460 | 37 | 607.11 | Burnsville          | 55337 | 20% - <50% | N/A | 0 | 27037060711 |
| 27 | 33460 | 37 | 607.13 | Burnsville          | 55337 | 20% - <50% | N/A | 0 | 27037060713 |
| 27 | 33460 | 37 | 607.14 | Burnsville          | 55337 | 20% - <50% | N/A | 0 | 27037060714 |
| 27 | 33460 | 37 | 607.16 | Eagan               | 55122 | 20% - <50% | N/A | 0 | 27037060716 |
| 27 | 33460 | 37 | 607.17 | Eagan               | 55121 | 20% - <50% | N/A | 0 | 27037060717 |
| 27 | 33460 | 37 | 607.21 | Eagan               | 55122 | 20% - <50% | N/A | 0 | 27037060721 |
| 27 | 33460 | 37 | 607.25 | Eagan               | 55121 | 20% - <50% | N/A | 0 | 27037060725 |
| 27 | 33460 | 37 | 607.26 | Eagan               | 55121 | 20% - <50% | N/A | 0 | 27037060726 |
| 27 | 33460 | 37 | 607.27 | Eagan               | 55123 | 20% - <50% | N/A | 0 | 27037060727 |
| 27 | 33460 | 37 | 607.28 | Eagan               | 55123 | 20% - <50% | N/A | 0 | 27037060728 |
| 27 | 33460 | 37 | 607.29 | Eagan               | 55123 | 20% - <50% | N/A | 0 | 27037060729 |
| 27 | 33460 | 37 | 607.31 | Eagan               | 55123 | 20% - <50% | N/A | 0 | 27037060731 |
| 27 | 33460 | 37 | 607.32 | Eagan               | 55123 | 10% - <20% | N/A | 0 | 27037060732 |
| 27 | 33460 | 37 | 607.33 | Eagan               | 55122 | 20% - <50% | N/A | 0 | 27037060733 |
| 27 | 33460 | 37 | 607.34 | Eagan               | 55122 | 20% - <50% | N/A | 0 | 27037060734 |
| 27 | 33460 | 37 | 607.35 | Eagan               | 55122 | 20% - <50% | N/A | 0 | 27037060735 |
| 27 | 33460 | 37 | 607.37 | Burnsville          | 55337 | 20% - <50% | N/A | 0 | 27037060737 |
| 27 | 33460 | 37 | 607.38 | Burnsville          | 55337 | 20% - <50% | N/A | 0 | 27037060738 |
| 27 | 33460 | 37 | 607.39 | Burnsville          | 55306 | 20% - <50% | N/A | 0 | 27037060739 |
| 27 | 33460 | 37 | 607.42 | Burnsville          | 55306 | 10% - <20% | N/A | 0 | 27037060742 |
| 27 | 33460 | 37 | 607.43 | Eagan               | 55122 | 50% - <80% | N/A | 0 | 27037060743 |
| 27 | 33460 | 37 | 607.44 | Eagan               | 55122 | 20% - <50% | N/A | 0 | 27037060744 |
| 27 | 33460 | 37 | 607.45 | Burnsville          | 55306 | 20% - <50% | N/A | 0 | 27037060745 |
| 27 | 33460 | 37 | 607.46 | Burnsville          | 55306 | 20% - <50% | N/A | 0 | 27037060746 |
| 27 | 33460 | 37 | 607.47 | Burnsville          | 55337 | 20% - <50% | N/A | 0 | 27037060747 |
| 27 | 33460 | 37 | 607.48 | Burnsville          | 55337 | 20% - <50% | N/A | 0 | 27037060748 |
| 27 | 33460 | 37 | 607.49 | Eagan               | 55122 | 20% - <50% | N/A | 0 | 27037060749 |

|    |       |    |        |              |       |            |     |   |             |
|----|-------|----|--------|--------------|-------|------------|-----|---|-------------|
| 27 | 33460 | 37 | 607.5  | Eagan        | 55122 | 20% - <50% | N/A | 0 | 27037060750 |
| 27 | 33460 | 37 | 607.51 | Eagan        | 55123 | 20% - <50% | N/A | 0 | 27037060751 |
| 27 | 33460 | 37 | 607.52 | Eagan        | 55123 | 10% - <20% | N/A | 0 | 27037060752 |
| 27 | 33460 | 37 | 607.53 | Burnsville   | 55306 | 20% - <50% | N/A | 0 | 27037060753 |
| 27 | 33460 | 37 | 607.54 | Burnsville   | 55337 | 20% - <50% | N/A | 0 | 27037060754 |
| 27 | 33460 | 37 | 608.05 | Apple Valley | 55124 | 50% - <80% | N/A | 0 | 27037060805 |
| 27 | 33460 | 37 | 608.06 | Apple Valley | 55124 | 20% - <50% | N/A | 0 | 27037060806 |
| 27 | 33460 | 37 | 608.11 | Apple Valley | 55124 | 20% - <50% | N/A | 0 | 27037060811 |
| 27 | 33460 | 37 | 608.12 | Apple Valley | 55124 | 20% - <50% | N/A | 0 | 27037060812 |
| 27 | 33460 | 37 | 608.13 | Lakeville    | 55044 | 20% - <50% | N/A | 0 | 27037060813 |
| 27 | 33460 | 37 | 608.14 | Lakeville    | 55044 | 10% - <20% | N/A | 0 | 27037060814 |
| 27 | 33460 | 37 | 608.15 | Lakeville    | 55044 | 10% - <20% | N/A | 0 | 27037060815 |
| 27 | 33460 | 37 | 608.16 | Lakeville    | 55044 | 10% - <20% | N/A | 0 | 27037060816 |
| 27 | 33460 | 37 | 608.19 | Lakeville    | 55044 | 10% - <20% | N/A | 0 | 27037060819 |
| 27 | 33460 | 37 | 608.22 | Apple Valley | 55124 | 10% - <20% | N/A | 0 | 27037060822 |
| 27 | 33460 | 37 | 608.23 | Apple Valley | 55124 | 10% - <20% | N/A | 0 | 27037060823 |
| 27 | 33460 | 37 | 608.24 | Apple Valley | 55124 | 10% - <20% | N/A | 0 | 27037060824 |
| 27 | 33460 | 37 | 608.28 | Apple Valley | 55124 | 20% - <50% | N/A | 0 | 27037060828 |
| 27 | 33460 | 37 | 608.29 | Apple Valley | 55124 | 20% - <50% | N/A | 0 | 27037060829 |
| 27 | 33460 | 37 | 608.3  | Lakeville    | 55068 | 20% - <50% | N/A | 0 | 27037060830 |
| 27 | 33460 | 37 | 608.31 | Lakeville    | 55044 | 20% - <50% | N/A | 0 | 27037060831 |
| 27 | 33460 | 37 | 608.32 | Lakeville    | 55024 | 20% - <50% | N/A | 0 | 27037060832 |
| 27 | 33460 | 37 | 608.33 | Lakeville    | 55044 | 20% - <50% | N/A | 0 | 27037060833 |
| 27 | 33460 | 37 | 608.34 | Lakeville    | 55044 | 10% - <20% | N/A | 0 | 27037060834 |
| 27 | 33460 | 37 | 608.35 | Lakeville    | 55044 | 10% - <20% | N/A | 0 | 27037060835 |
| 27 | 33460 | 37 | 608.36 | Lakeville    | 55044 | 20% - <50% | N/A | 0 | 27037060836 |
| 27 | 33460 | 37 | 608.37 | Lakeville    | 55044 | 20% - <50% | N/A | 0 | 27037060837 |
| 27 | 33460 | 37 | 608.38 | Apple Valley | 55124 | 20% - <50% | N/A | 0 | 27037060838 |
| 27 | 33460 | 37 | 608.39 | Apple Valley | 55124 | 20% - <50% | N/A | 0 | 27037060839 |
| 27 | 33460 | 37 | 608.4  | Apple Valley | 55124 | 10% - <20% | N/A | 0 | 27037060840 |
| 27 | 33460 | 37 | 608.41 | Apple Valley | 55124 | 10% - <20% | N/A | 0 | 27037060841 |
| 27 | 33460 | 37 | 609.02 | Farmington   | 55024 | 10% - <20% | N/A | 0 | 27037060902 |
| 27 | 33460 | 37 | 609.04 | Castle Rock  | 55024 | 10% - <20% | N/A | 0 | 27037060904 |
| 27 | 33460 | 37 | 609.05 | Empire       | 55024 | 20% - <50% | N/A | 0 | 27037060905 |
| 27 | 33460 | 37 | 609.06 | Farmington   | 55024 | 10% - <20% | N/A | 0 | 27037060906 |
| 27 | 33460 | 37 | 609.07 | Empire       | 55024 | 10% - <20% | N/A | 0 | 27037060907 |
| 27 | 33460 | 37 | 610.01 | Vermillion   | 55033 | <10%       | N/A | 0 | 27037061001 |
| 27 | 33460 | 37 | 610.03 | Rosemount    | 55068 | 10% - <20% | N/A | 0 | 27037061003 |
| 27 | 33460 | 37 | 610.05 | Rosemount    | 55068 | 20% - <50% | N/A | 0 | 27037061005 |
| 27 | 33460 | 37 | 610.07 | Rosemount    | 55068 | 20% - <50% | N/A | 0 | 27037061007 |
| 27 | 33460 | 37 | 610.08 | Rosemount    | 55068 | 20% - <50% | N/A | 0 | 27037061008 |
| 27 | 33460 | 37 | 610.09 | Rosemount    | 55068 | 20% - <50% | N/A | 0 | 27037061009 |
| 27 | 33460 | 37 | 610.1  | Rosemount    | 55068 | 10% - <20% | N/A | 0 | 27037061010 |
| 27 | 33460 | 37 | 610.11 | Rosemount    | 55068 | 10% - <20% | N/A | 0 | 27037061011 |
| 27 | 33460 | 37 | 611.02 | Hastings     | 55033 | 10% - <20% | N/A | 0 | 27037061102 |
| 27 | 33460 | 37 | 611.05 | Hastings     | 55033 | 10% - <20% | N/A | 0 | 27037061105 |
| 27 | 33460 | 37 | 611.06 | Hastings     | 55033 | 10% - <20% | N/A | 0 | 27037061106 |
| 27 | 33460 | 37 | 611.09 | Hastings     | 55033 | 10% - <20% | N/A | 0 | 27037061109 |



|    |       |    |        |                 |       |            |     |   |             |
|----|-------|----|--------|-----------------|-------|------------|-----|---|-------------|
| 27 | 33460 | 37 | 611.1  | Marshan         | 55033 | 10% - <20% | N/A | 0 | 27037061110 |
| 27 | 33460 | 37 | 611.11 | Hastings        | 55033 | <10%       | N/A | 0 | 27037061111 |
| 27 | 33460 | 37 | 611.12 | Marshan         | 55033 | <10%       | N/A | 0 | 27037061112 |
| 27 | 33460 | 37 | 614.01 | Marshan         | 55033 | <10%       | N/A | 0 | 27037061401 |
| 27 | 33460 | 37 | 614.02 | Hampton         | 55031 | <10%       | N/A | 0 | 27037061402 |
| 27 | 33460 | 37 | 615.01 | Eureka          | 55024 | <10%       | N/A | 0 | 27037061501 |
| 27 | 33460 | 37 | 615.02 | Greenvale       | 55057 | <10%       | N/A | 0 | 27037061502 |
| 27 | 33460 | 53 | 1.01   | Minneapolis     | 55430 | 50% - <80% | N/A | 0 | 27053000101 |
| 27 | 33460 | 53 | 1.02   | Minneapolis     | 55430 | 50% - <80% | N/A | 0 | 27053000102 |
| 27 | 33460 | 53 | 3      | Minneapolis     | 55412 | 20% - <50% | N/A | 0 | 27053000300 |
| 27 | 33460 | 53 | 6.01   | Minneapolis     | 55418 | 20% - <50% | N/A | 0 | 27053000601 |
| 27 | 33460 | 53 | 6.03   | Minneapolis     | 55418 | 20% - <50% | N/A | 0 | 27053000603 |
| 27 | 33460 | 53 | 11     | Minneapolis     | 55418 | 20% - <50% | N/A | 0 | 27053001100 |
| 27 | 33460 | 53 | 17     | Minneapolis     | 55418 | 20% - <50% | N/A | 0 | 27053001700 |
| 27 | 33460 | 53 | 22     | Minneapolis     | 55411 | 80% - 100% | N/A | 0 | 27053002200 |
| 27 | 33460 | 53 | 24     | Minneapolis     | 55413 | 20% - <50% | N/A | 0 | 27053002400 |
| 27 | 33460 | 53 | 27     | Minneapolis     | 55411 | 80% - 100% | N/A | 0 | 27053002700 |
| 27 | 33460 | 53 | 32     | Minneapolis     | 55411 | 50% - <80% | N/A | 0 | 27053003200 |
| 27 | 33460 | 53 | 33     | Minneapolis     | 55411 | 80% - 100% | N/A | 0 | 27053003300 |
| 27 | 33460 | 53 | 38.01  | Minneapolis     | 55414 | 20% - <50% | N/A | 0 | 27053003801 |
| 27 | 33460 | 53 | 38.02  | Minneapolis     | 55414 | 20% - <50% | N/A | 0 | 27053003802 |
| 27 | 33460 | 53 | 59.01  | Minneapolis     | 55404 | 50% - <80% | N/A | 0 | 27053005901 |
| 27 | 33460 | 53 | 59.02  | Minneapolis     | 55404 | 50% - <80% | N/A | 0 | 27053005902 |
| 27 | 33460 | 53 | 68     | Minneapolis     | 55404 | 20% - <50% | N/A | 0 | 27053006800 |
| 27 | 33460 | 53 | 77     | Minneapolis     | 55408 | 20% - <50% | N/A | 0 | 27053007700 |
| 27 | 33460 | 53 | 78.01  | Minneapolis     | 55408 | 50% - <80% | N/A | 0 | 27053007801 |
| 27 | 33460 | 53 | 81     | Minneapolis     | 55408 | 10% - <20% | N/A | 0 | 27053008100 |
| 27 | 33460 | 53 | 82     | Minneapolis     | 55408 | 50% - <80% | N/A | 0 | 27053008200 |
| 27 | 33460 | 53 | 83     | Minneapolis     | 55408 | 50% - <80% | N/A | 0 | 27053008300 |
| 27 | 33460 | 53 | 84     | Minneapolis     | 55407 | 50% - <80% | N/A | 0 | 27053008400 |
| 27 | 33460 | 53 | 85     | Minneapolis     | 55407 | 50% - <80% | N/A | 0 | 27053008500 |
| 27 | 33460 | 53 | 95     | Minneapolis     | 55407 | 50% - <80% | N/A | 0 | 27053009500 |
| 27 | 33460 | 53 | 96     | Minneapolis     | 55407 | 20% - <50% | N/A | 0 | 27053009600 |
| 27 | 33460 | 53 | 106    | Minneapolis     | 55410 | 10% - <20% | N/A | 0 | 27053010600 |
| 27 | 33460 | 53 | 107    | Minneapolis     | 55419 | 10% - <20% | N/A | 0 | 27053010700 |
| 27 | 33460 | 53 | 110    | Minneapolis     | 55407 | 20% - <50% | N/A | 0 | 27053011000 |
| 27 | 33460 | 53 | 117.03 | Minneapolis     | 55417 | 10% - <20% | N/A | 0 | 27053011703 |
| 27 | 33460 | 53 | 117.04 | Minneapolis     | 55417 | 20% - <50% | N/A | 0 | 27053011704 |
| 27 | 33460 | 53 | 118    | Minneapolis     | 55417 | 10% - <20% | N/A | 0 | 27053011800 |
| 27 | 33460 | 53 | 119.98 | Minneapolis     | 55417 | 20% - <50% | N/A | 0 | 27053011998 |
| 27 | 33460 | 53 | 120.01 | Minneapolis     | 55419 | 10% - <20% | N/A | 0 | 27053012001 |
| 27 | 33460 | 53 | 120.03 | Minneapolis     | 55419 | 20% - <50% | N/A | 0 | 27053012003 |
| 27 | 33460 | 53 | 121.01 | Minneapolis     | 55417 | 20% - <50% | N/A | 0 | 27053012101 |
| 27 | 33460 | 53 | 121.02 | Minneapolis     | 55417 | 20% - <50% | N/A | 0 | 27053012102 |
| 27 | 33460 | 53 | 201.01 | St. Anthony     | 55418 | 10% - <20% | N/A | 0 | 27053020101 |
| 27 | 33460 | 53 | 201.02 | St. Anthony     | 55418 | 10% - <20% | N/A | 0 | 27053020102 |
| 27 | 33460 | 53 | 202.01 | Brooklyn Center | 55430 | 50% - <80% | N/A | 0 | 27053020201 |
| 27 | 33460 | 53 | 202.02 | Brooklyn Center | 55430 | 50% - <80% | N/A | 0 | 27053020202 |

|    |       |    |        |                 |       |            |     |   |             |
|----|-------|----|--------|-----------------|-------|------------|-----|---|-------------|
| 27 | 33460 | 53 | 203.01 | Brooklyn Center | 55429 | 50% - <80% | N/A | 0 | 27053020301 |
| 27 | 33460 | 53 | 203.02 | Brooklyn Center | 55429 | 50% - <80% | N/A | 0 | 27053020302 |
| 27 | 33460 | 53 | 203.03 | Brooklyn Center | 55429 | 50% - <80% | N/A | 0 | 27053020303 |
| 27 | 33460 | 53 | 203.04 | Brooklyn Center | 55429 | 50% - <80% | N/A | 0 | 27053020304 |
| 27 | 33460 | 53 | 204    | Brooklyn Center | 55429 | 50% - <80% | N/A | 0 | 27053020400 |
| 27 | 33460 | 53 | 205    | Brooklyn Center | 55430 | 50% - <80% | N/A | 0 | 27053020500 |
| 27 | 33460 | 53 | 206    | Brooklyn Center | 55430 | 50% - <80% | N/A | 0 | 27053020600 |
| 27 | 33460 | 53 | 207    | Crystal         | 55429 | 20% - <50% | N/A | 0 | 27053020700 |
| 27 | 33460 | 53 | 208.01 | Crystal         | 55428 | 20% - <50% | N/A | 0 | 27053020801 |
| 27 | 33460 | 53 | 208.04 | Crystal         | 55428 | 20% - <50% | N/A | 0 | 27053020804 |
| 27 | 33460 | 53 | 209.02 | Crystal         | 55427 | 20% - <50% | N/A | 0 | 27053020902 |
| 27 | 33460 | 53 | 209.03 | Crystal         | 55422 | 20% - <50% | N/A | 0 | 27053020903 |
| 27 | 33460 | 53 | 210.01 | Crystal         | 55427 | 20% - <50% | N/A | 0 | 27053021001 |
| 27 | 33460 | 53 | 210.02 | Crystal         | 55422 | 20% - <50% | N/A | 0 | 27053021002 |
| 27 | 33460 | 53 | 211    | Robbinsdale     | 55422 | 20% - <50% | N/A | 0 | 27053021100 |
| 27 | 33460 | 53 | 212    | Robbinsdale     | 55422 | 20% - <50% | N/A | 0 | 27053021200 |
| 27 | 33460 | 53 | 213    | Robbinsdale     | 55422 | 20% - <50% | N/A | 0 | 27053021300 |
| 27 | 33460 | 53 | 214    | Robbinsdale     | 55422 | 20% - <50% | N/A | 0 | 27053021400 |
| 27 | 33460 | 53 | 215.01 | New Hope        | 55428 | 20% - <50% | N/A | 0 | 27053021501 |
| 27 | 33460 | 53 | 215.02 | New Hope        | 55428 | 50% - <80% | N/A | 0 | 27053021502 |
| 27 | 33460 | 53 | 215.03 | New Hope        | 55428 | 20% - <50% | N/A | 0 | 27053021503 |
| 27 | 33460 | 53 | 215.04 | New Hope        | 55427 | 20% - <50% | N/A | 0 | 27053021504 |
| 27 | 33460 | 53 | 215.05 | New Hope        | 55427 | 20% - <50% | N/A | 0 | 27053021505 |
| 27 | 33460 | 53 | 216.01 | Golden Valley   | 55427 | 20% - <50% | N/A | 0 | 27053021601 |
| 27 | 33460 | 53 | 216.02 | Golden Valley   | 55427 | 20% - <50% | N/A | 0 | 27053021602 |
| 27 | 33460 | 53 | 217    | Golden Valley   | 55422 | 10% - <20% | N/A | 0 | 27053021700 |
| 27 | 33460 | 53 | 218    | Golden Valley   | 55422 | 10% - <20% | N/A | 0 | 27053021800 |
| 27 | 33460 | 53 | 219    | Golden Valley   | 55426 | 10% - <20% | N/A | 0 | 27053021900 |
| 27 | 33460 | 53 | 220    | St. Louis Park  | 55416 | 10% - <20% | N/A | 0 | 27053022000 |
| 27 | 33460 | 53 | 221.01 | St. Louis Park  | 55426 | 20% - <50% | N/A | 0 | 27053022101 |
| 27 | 33460 | 53 | 221.02 | St. Louis Park  | 55426 | 20% - <50% | N/A | 0 | 27053022102 |
| 27 | 33460 | 53 | 222    | St. Louis Park  | 55426 | 20% - <50% | N/A | 0 | 27053022200 |
| 27 | 33460 | 53 | 223.01 | St. Louis Park  | 55426 | 10% - <20% | N/A | 0 | 27053022301 |
| 27 | 33460 | 53 | 223.02 | St. Louis Park  | 55426 | 20% - <50% | N/A | 0 | 27053022302 |
| 27 | 33460 | 53 | 224    | St. Louis Park  | 55426 | 20% - <50% | N/A | 0 | 27053022400 |
| 27 | 33460 | 53 | 227    | St. Louis Park  | 55416 | 20% - <50% | N/A | 0 | 27053022700 |
| 27 | 33460 | 53 | 228.01 | St. Louis Park  | 55416 | <10%       | N/A | 0 | 27053022801 |
| 27 | 33460 | 53 | 228.02 | St. Louis Park  | 55416 | 20% - <50% | N/A | 0 | 27053022802 |
| 27 | 33460 | 53 | 229.01 | St. Louis Park  | 55416 | 10% - <20% | N/A | 0 | 27053022901 |
| 27 | 33460 | 53 | 229.02 | St. Louis Park  | 55416 | <10%       | N/A | 0 | 27053022902 |
| 27 | 33460 | 53 | 230    | St. Louis Park  | 55416 | 10% - <20% | N/A | 0 | 27053023000 |
| 27 | 33460 | 53 | 231    | Edina           | 55416 | 10% - <20% | N/A | 0 | 27053023100 |
| 27 | 33460 | 53 | 232.01 | Hopkins         | 55305 | 20% - <50% | N/A | 0 | 27053023201 |
| 27 | 33460 | 53 | 232.02 | Hopkins         | 55343 | 50% - <80% | N/A | 0 | 27053023202 |
| 27 | 33460 | 53 | 233    | Hopkins         | 55343 | 20% - <50% | N/A | 0 | 27053023300 |
| 27 | 33460 | 53 | 234.01 | Hopkins         | 55343 | 20% - <50% | N/A | 0 | 27053023401 |
| 27 | 33460 | 53 | 234.02 | Hopkins         | 55343 | 20% - <50% | N/A | 0 | 27053023402 |
| 27 | 33460 | 53 | 235.01 | Edina           | 55436 | 20% - <50% | N/A | 0 | 27053023501 |

|    |       |    |        |              |       |            |     |   |             |
|----|-------|----|--------|--------------|-------|------------|-----|---|-------------|
| 27 | 33460 | 53 | 235.02 | Edina        | 55436 | 10% - <20% | N/A | 0 | 27053023502 |
| 27 | 33460 | 53 | 236    | Edina        | 55424 | 10% - <20% | N/A | 0 | 27053023600 |
| 27 | 33460 | 53 | 237    | Edina        | 55436 | 10% - <20% | N/A | 0 | 27053023700 |
| 27 | 33460 | 53 | 238.01 | Edina        | 55424 | 10% - <20% | N/A | 0 | 27053023801 |
| 27 | 33460 | 53 | 238.02 | Edina        | 55410 | 10% - <20% | N/A | 0 | 27053023802 |
| 27 | 33460 | 53 | 239.01 | Edina        | 55439 | 10% - <20% | N/A | 0 | 27053023901 |
| 27 | 33460 | 53 | 239.02 | Edina        | 55439 | 20% - <50% | N/A | 0 | 27053023902 |
| 27 | 33460 | 53 | 239.03 | Edina        | 55439 | 20% - <50% | N/A | 0 | 27053023903 |
| 27 | 33460 | 53 | 240.03 | Edina        | 55435 | 20% - <50% | N/A | 0 | 27053024003 |
| 27 | 33460 | 53 | 240.04 | Edina        | 55435 | 20% - <50% | N/A | 0 | 27053024004 |
| 27 | 33460 | 53 | 240.05 | Edina        | 55435 | 20% - <50% | N/A | 0 | 27053024005 |
| 27 | 33460 | 53 | 240.06 | Edina        | 55435 | 10% - <20% | N/A | 0 | 27053024006 |
| 27 | 33460 | 53 | 241    | Richfield    | 55423 | 20% - <50% | N/A | 0 | 27053024100 |
| 27 | 33460 | 53 | 242    | Richfield    | 55423 | 20% - <50% | N/A | 0 | 27053024200 |
| 27 | 33460 | 53 | 243    | Richfield    | 55423 | 20% - <50% | N/A | 0 | 27053024300 |
| 27 | 33460 | 53 | 244    | Richfield    | 55423 | 20% - <50% | N/A | 0 | 27053024400 |
| 27 | 33460 | 53 | 245    | Richfield    | 55423 | 20% - <50% | N/A | 0 | 27053024500 |
| 27 | 33460 | 53 | 246    | Richfield    | 55423 | 20% - <50% | N/A | 0 | 27053024600 |
| 27 | 33460 | 53 | 247    | Richfield    | 55423 | 20% - <50% | N/A | 0 | 27053024700 |
| 27 | 33460 | 53 | 248.01 | Richfield    | 55423 | 20% - <50% | N/A | 0 | 27053024801 |
| 27 | 33460 | 53 | 248.02 | Richfield    | 55423 | 50% - <80% | N/A | 0 | 27053024802 |
| 27 | 33460 | 53 | 249.03 | Richfield    | 55423 | 50% - <80% | N/A | 0 | 27053024903 |
| 27 | 33460 | 53 | 249.04 | Richfield    | 55423 | 50% - <80% | N/A | 0 | 27053024904 |
| 27 | 33460 | 53 | 251    | Bloomington  | 55425 | 20% - <50% | N/A | 0 | 27053025100 |
| 27 | 33460 | 53 | 252.01 | Bloomington  | 55425 | 50% - <80% | N/A | 0 | 27053025201 |
| 27 | 33460 | 53 | 252.05 | Bloomington  | 55420 | 20% - <50% | N/A | 0 | 27053025205 |
| 27 | 33460 | 53 | 253.01 | Bloomington  | 55425 | 10% - <20% | N/A | 0 | 27053025301 |
| 27 | 33460 | 53 | 253.02 | Bloomington  | 55420 | 20% - <50% | N/A | 0 | 27053025302 |
| 27 | 33460 | 53 | 254.01 | Bloomington  | 55420 | 20% - <50% | N/A | 0 | 27053025401 |
| 27 | 33460 | 53 | 254.03 | Bloomington  | 55420 | 20% - <50% | N/A | 0 | 27053025403 |
| 27 | 33460 | 53 | 256.01 | Bloomington  | 55431 | 20% - <50% | N/A | 0 | 27053025601 |
| 27 | 33460 | 53 | 256.03 | Bloomington  | 55431 | 20% - <50% | N/A | 0 | 27053025603 |
| 27 | 33460 | 53 | 256.05 | Bloomington  | 55437 | 20% - <50% | N/A | 0 | 27053025605 |
| 27 | 33460 | 53 | 257.02 | Bloomington  | 55431 | 20% - <50% | N/A | 0 | 27053025702 |
| 27 | 33460 | 53 | 257.03 | Bloomington  | 55437 | 20% - <50% | N/A | 0 | 27053025703 |
| 27 | 33460 | 53 | 257.04 | Bloomington  | 55437 | 20% - <50% | N/A | 0 | 27053025704 |
| 27 | 33460 | 53 | 258.01 | Bloomington  | 55431 | 20% - <50% | N/A | 0 | 27053025801 |
| 27 | 33460 | 53 | 258.02 | Bloomington  | 55431 | 10% - <20% | N/A | 0 | 27053025802 |
| 27 | 33460 | 53 | 258.03 | Bloomington  | 55437 | 20% - <50% | N/A | 0 | 27053025803 |
| 27 | 33460 | 53 | 258.05 | Bloomington  | 55431 | 10% - <20% | N/A | 0 | 27053025805 |
| 27 | 33460 | 53 | 259.05 | Bloomington  | 55438 | 10% - <20% | N/A | 0 | 27053025905 |
| 27 | 33460 | 53 | 259.06 | Bloomington  | 55438 | 20% - <50% | N/A | 0 | 27053025906 |
| 27 | 33460 | 53 | 259.07 | Bloomington  | 55438 | 10% - <20% | N/A | 0 | 27053025907 |
| 27 | 33460 | 53 | 259.08 | Bloomington  | 55437 | 10% - <20% | N/A | 0 | 27053025908 |
| 27 | 33460 | 53 | 259.09 | Bloomington  | 55437 | 20% - <50% | N/A | 0 | 27053025909 |
| 27 | 33460 | 53 | 260.05 | Eden Prairie | 55346 | 20% - <50% | N/A | 0 | 27053026005 |
| 27 | 33460 | 53 | 260.06 | Eden Prairie | 55346 | 20% - <50% | N/A | 0 | 27053026006 |
| 27 | 33460 | 53 | 260.07 | Eden Prairie | 55344 | 20% - <50% | N/A | 0 | 27053026007 |

|    |       |    |        |              |       |            |     |   |             |
|----|-------|----|--------|--------------|-------|------------|-----|---|-------------|
| 27 | 33460 | 53 | 260.13 | Eden Prairie | 55346 | 10% - <20% | N/A | 0 | 27053026013 |
| 27 | 33460 | 53 | 260.14 | Eden Prairie | 55346 | 10% - <20% | N/A | 0 | 27053026014 |
| 27 | 33460 | 53 | 260.15 | Eden Prairie | 55347 | 20% - <50% | N/A | 0 | 27053026015 |
| 27 | 33460 | 53 | 260.19 | Eden Prairie | 55344 | 50% - <80% | N/A | 0 | 27053026019 |
| 27 | 33460 | 53 | 260.2  | Eden Prairie | 55344 | 20% - <50% | N/A | 0 | 27053026020 |
| 27 | 33460 | 53 | 260.21 | Eden Prairie | 55347 | 10% - <20% | N/A | 0 | 27053026021 |
| 27 | 33460 | 53 | 260.23 | Eden Prairie | 55347 | 20% - <50% | N/A | 0 | 27053026023 |
| 27 | 33460 | 53 | 260.24 | Eden Prairie | 55347 | 10% - <20% | N/A | 0 | 27053026024 |
| 27 | 33460 | 53 | 260.25 | Eden Prairie | 55347 | 20% - <50% | N/A | 0 | 27053026025 |
| 27 | 33460 | 53 | 260.26 | Eden Prairie | 55347 | 20% - <50% | N/A | 0 | 27053026026 |
| 27 | 33460 | 53 | 260.27 | Eden Prairie | 55347 | 10% - <20% | N/A | 0 | 27053026027 |
| 27 | 33460 | 53 | 260.28 | Eden Prairie | 55347 | 20% - <50% | N/A | 0 | 27053026028 |
| 27 | 33460 | 53 | 261.01 | Minnetonka   | 55305 | 10% - <20% | N/A | 0 | 27053026101 |
| 27 | 33460 | 53 | 261.03 | Minnetonka   | 55343 | 10% - <20% | N/A | 0 | 27053026103 |
| 27 | 33460 | 53 | 261.04 | Minnetonka   | 55343 | 20% - <50% | N/A | 0 | 27053026104 |
| 27 | 33460 | 53 | 262.01 | Minnetonka   | 55345 | 10% - <20% | N/A | 0 | 27053026201 |
| 27 | 33460 | 53 | 262.02 | Minnetonka   | 55345 | 10% - <20% | N/A | 0 | 27053026202 |
| 27 | 33460 | 53 | 262.05 | Minnetonka   | 55345 | 10% - <20% | N/A | 0 | 27053026205 |
| 27 | 33460 | 53 | 262.06 | Minnetonka   | 55345 | 10% - <20% | N/A | 0 | 27053026206 |
| 27 | 33460 | 53 | 262.07 | Minnetonka   | 55345 | 20% - <50% | N/A | 0 | 27053026207 |
| 27 | 33460 | 53 | 262.08 | Minnetonka   | 55345 | 10% - <20% | N/A | 0 | 27053026208 |
| 27 | 33460 | 53 | 263.01 | Minnetonka   | 55391 | 10% - <20% | N/A | 0 | 27053026301 |
| 27 | 33460 | 53 | 263.02 | Minnetonka   | 55345 | <10%       | N/A | 0 | 27053026302 |
| 27 | 33460 | 53 | 264.03 | Minnetonka   | 55305 | 20% - <50% | N/A | 0 | 27053026403 |
| 27 | 33460 | 53 | 264.04 | Minnetonka   | 55305 | 10% - <20% | N/A | 0 | 27053026404 |
| 27 | 33460 | 53 | 264.05 | Minnetonka   | 55305 | 20% - <50% | N/A | 0 | 27053026405 |
| 27 | 33460 | 53 | 264.06 | Minnetonka   | 55305 | 20% - <50% | N/A | 0 | 27053026406 |
| 27 | 33460 | 53 | 265.05 | Plymouth     | 55441 | 10% - <20% | N/A | 0 | 27053026505 |
| 27 | 33460 | 53 | 265.07 | Plymouth     | 55441 | 20% - <50% | N/A | 0 | 27053026507 |
| 27 | 33460 | 53 | 265.08 | Plymouth     | 55442 | 10% - <20% | N/A | 0 | 27053026508 |
| 27 | 33460 | 53 | 265.09 | Plymouth     | 55442 | 10% - <20% | N/A | 0 | 27053026509 |
| 27 | 33460 | 53 | 265.1  | Plymouth     | 55442 | 20% - <50% | N/A | 0 | 27053026510 |
| 27 | 33460 | 53 | 265.11 | Plymouth     | 55441 | 20% - <50% | N/A | 0 | 27053026511 |
| 27 | 33460 | 53 | 265.14 | Plymouth     | 55447 | 20% - <50% | N/A | 0 | 27053026514 |
| 27 | 33460 | 53 | 265.15 | Plymouth     | 55441 | 20% - <50% | N/A | 0 | 27053026515 |
| 27 | 33460 | 53 | 265.16 | Plymouth     | 55441 | 20% - <50% | N/A | 0 | 27053026516 |
| 27 | 33460 | 53 | 266.05 | Plymouth     | 55446 | 20% - <50% | N/A | 0 | 27053026605 |
| 27 | 33460 | 53 | 266.06 | Plymouth     | 55447 | 10% - <20% | N/A | 0 | 27053026606 |
| 27 | 33460 | 53 | 266.09 | Plymouth     | 55447 | 10% - <20% | N/A | 0 | 27053026609 |
| 27 | 33460 | 53 | 266.1  | Plymouth     | 55447 | 10% - <20% | N/A | 0 | 27053026610 |
| 27 | 33460 | 53 | 266.11 | Plymouth     | 55447 | 20% - <50% | N/A | 0 | 27053026611 |
| 27 | 33460 | 53 | 266.14 | Plymouth     | 55446 | 10% - <20% | N/A | 0 | 27053026614 |
| 27 | 33460 | 53 | 266.15 | Plymouth     | 55446 | 20% - <50% | N/A | 0 | 27053026615 |
| 27 | 33460 | 53 | 266.16 | Plymouth     | 55446 | 20% - <50% | N/A | 0 | 27053026616 |
| 27 | 33460 | 53 | 266.17 | Plymouth     | 55446 | 20% - <50% | N/A | 0 | 27053026617 |
| 27 | 33460 | 53 | 267.02 | Osseo        | 55369 | 20% - <50% | N/A | 0 | 27053026702 |
| 27 | 33460 | 53 | 267.06 | Maple Grove  | 55369 | 10% - <20% | N/A | 0 | 27053026706 |
| 27 | 33460 | 53 | 267.07 | Maple Grove  | 55369 | 10% - <20% | N/A | 0 | 27053026707 |

|    |       |    |        |               |       |            |     |   |             |
|----|-------|----|--------|---------------|-------|------------|-----|---|-------------|
| 27 | 33460 | 53 | 267.08 | Maple Grove   | 55369 | 10% - <20% | N/A | 0 | 27053026708 |
| 27 | 33460 | 53 | 267.11 | Maple Grove   | 55311 | 10% - <20% | N/A | 0 | 27053026711 |
| 27 | 33460 | 53 | 267.12 | Maple Grove   | 55369 | 20% - <50% | N/A | 0 | 27053026712 |
| 27 | 33460 | 53 | 267.13 | Maple Grove   | 55369 | 10% - <20% | N/A | 0 | 27053026713 |
| 27 | 33460 | 53 | 267.17 | Maple Grove   | 55311 | 20% - <50% | N/A | 0 | 27053026717 |
| 27 | 33460 | 53 | 267.18 | Maple Grove   | 55311 | 20% - <50% | N/A | 0 | 27053026718 |
| 27 | 33460 | 53 | 267.19 | Maple Grove   | 55311 | 10% - <20% | N/A | 0 | 27053026719 |
| 27 | 33460 | 53 | 267.2  | Maple Grove   | 55311 | 20% - <50% | N/A | 0 | 27053026720 |
| 27 | 33460 | 53 | 267.21 | Maple Grove   | 55311 | 10% - <20% | N/A | 0 | 27053026721 |
| 27 | 33460 | 53 | 267.22 | Maple Grove   | 55311 | 20% - <50% | N/A | 0 | 27053026722 |
| 27 | 33460 | 53 | 267.23 | Maple Grove   | 55311 | 20% - <50% | N/A | 0 | 27053026723 |
| 27 | 33460 | 53 | 267.24 | Maple Grove   | 55369 | 20% - <50% | N/A | 0 | 27053026724 |
| 27 | 33460 | 53 | 267.25 | Maple Grove   | 55369 | 20% - <50% | N/A | 0 | 27053026725 |
| 27 | 33460 | 53 | 267.26 | Maple Grove   | 55369 | 20% - <50% | N/A | 0 | 27053026726 |
| 27 | 33460 | 53 | 268.07 | Brooklyn Park | 55428 | 20% - <50% | N/A | 0 | 27053026807 |
| 27 | 33460 | 53 | 268.09 | Brooklyn Park | 55429 | 80% - 100% | N/A | 0 | 27053026809 |
| 27 | 33460 | 53 | 268.11 | Brooklyn Park | 55443 | 50% - <80% | N/A | 0 | 27053026811 |
| 27 | 33460 | 53 | 268.12 | Brooklyn Park | 55445 | 20% - <50% | N/A | 0 | 27053026812 |
| 27 | 33460 | 53 | 268.14 | Brooklyn Park | 55444 | 50% - <80% | N/A | 0 | 27053026814 |
| 27 | 33460 | 53 | 268.15 | Brooklyn Park | 55444 | 50% - <80% | N/A | 0 | 27053026815 |
| 27 | 33460 | 53 | 268.16 | Brooklyn Park | 55445 | 50% - <80% | N/A | 0 | 27053026816 |
| 27 | 33460 | 53 | 268.18 | Brooklyn Park | 55428 | 50% - <80% | N/A | 0 | 27053026818 |
| 27 | 33460 | 53 | 268.19 | Brooklyn Park | 55429 | 80% - 100% | N/A | 0 | 27053026819 |
| 27 | 33460 | 53 | 268.22 | Brooklyn Park | 55443 | 20% - <50% | N/A | 0 | 27053026822 |
| 27 | 33460 | 53 | 268.23 | Brooklyn Park | 55443 | 50% - <80% | N/A | 0 | 27053026823 |
| 27 | 33460 | 53 | 268.24 | Brooklyn Park | 55443 | 20% - <50% | N/A | 0 | 27053026824 |
| 27 | 33460 | 53 | 268.25 | Brooklyn Park | 55444 | 50% - <80% | N/A | 0 | 27053026825 |
| 27 | 33460 | 53 | 268.26 | Brooklyn Park | 55443 | 20% - <50% | N/A | 0 | 27053026826 |
| 27 | 33460 | 53 | 268.27 | Brooklyn Park | 55443 | 50% - <80% | N/A | 0 | 27053026827 |
| 27 | 33460 | 53 | 268.28 | Brooklyn Park | 55443 | 50% - <80% | N/A | 0 | 27053026828 |
| 27 | 33460 | 53 | 269.03 | Champlin      | 55316 | 10% - <20% | N/A | 0 | 27053026903 |
| 27 | 33460 | 53 | 269.06 | Champlin      | 55316 | 20% - <50% | N/A | 0 | 27053026906 |
| 27 | 33460 | 53 | 269.07 | Champlin      | 55316 | 10% - <20% | N/A | 0 | 27053026907 |
| 27 | 33460 | 53 | 269.08 | Champlin      | 55316 | 20% - <50% | N/A | 0 | 27053026908 |
| 27 | 33460 | 53 | 269.1  | Dayton        | 55327 | 20% - <50% | N/A | 0 | 27053026910 |
| 27 | 33460 | 53 | 269.11 | Hassan        | 55374 | 10% - <20% | N/A | 0 | 27053026911 |
| 27 | 33460 | 53 | 269.12 | Hassan        | 55374 | <10%       | N/A | 0 | 27053026912 |
| 27 | 33460 | 53 | 270.01 | Greenfield    | 55357 | <10%       | N/A | 0 | 27053027001 |
| 27 | 33460 | 53 | 270.02 | Independence  | 55359 | <10%       | N/A | 0 | 27053027002 |
| 27 | 33460 | 53 | 271.01 | Medina        | 55340 | 10% - <20% | N/A | 0 | 27053027101 |
| 27 | 33460 | 53 | 271.02 | Corcoran      | 55340 | 10% - <20% | N/A | 0 | 27053027102 |
| 27 | 33460 | 53 | 272.02 | Long Lake     | 55356 | 10% - <20% | N/A | 0 | 27053027202 |
| 27 | 33460 | 53 | 272.03 | Orono         | 55331 | <10%       | N/A | 0 | 27053027203 |
| 27 | 33460 | 53 | 272.04 | Orono         | 55356 | <10%       | N/A | 0 | 27053027204 |
| 27 | 33460 | 53 | 272.05 | Orono         | 55391 | <10%       | N/A | 0 | 27053027205 |
| 27 | 33460 | 53 | 273    | Wayzata       | 55391 | 10% - <20% | N/A | 0 | 27053027300 |
| 27 | 33460 | 53 | 274    | Deephaven     | 55391 | <10%       | N/A | 0 | 27053027400 |
| 27 | 33460 | 53 | 275.01 | Shorewood     | 55331 | 10% - <20% | N/A | 0 | 27053027501 |

|    |       |    |         |                |       |            |     |   |             |
|----|-------|----|---------|----------------|-------|------------|-----|---|-------------|
| 27 | 33460 | 53 | 275.03  | Shorewood      | 55331 | <10%       | N/A | 0 | 27053027503 |
| 27 | 33460 | 53 | 275.04  | Shorewood      | 55331 | 10% - <20% | N/A | 0 | 27053027504 |
| 27 | 33460 | 53 | 276.01  | Mound          | 55364 | 10% - <20% | N/A | 0 | 27053027601 |
| 27 | 33460 | 53 | 276.02  | Mound          | 55364 | 10% - <20% | N/A | 0 | 27053027602 |
| 27 | 33460 | 53 | 277.01  | Minnetrista    | 55364 | <10%       | N/A | 0 | 27053027701 |
| 27 | 33460 | 53 | 277.02  | St. Bonifacius | 55375 | <10%       | N/A | 0 | 27053027702 |
| 27 | 33460 | 53 | 277.03  | Minnetrista    | 55331 | <10%       | N/A | 0 | 27053027703 |
| 27 | 33460 | 53 | 1002    | Minneapolis    | 55412 | 50% - <80% | N/A | 0 | 27053100200 |
| 27 | 33460 | 53 | 1004    | Minneapolis    | 55412 | 50% - <80% | N/A | 0 | 27053100400 |
| 27 | 33460 | 53 | 1005    | Minneapolis    | 55418 | 20% - <50% | N/A | 0 | 27053100500 |
| 27 | 33460 | 53 | 1007    | Minneapolis    | 55412 | 50% - <80% | N/A | 0 | 27053100700 |
| 27 | 33460 | 53 | 1008    | Minneapolis    | 55412 | 50% - <80% | N/A | 0 | 27053100800 |
| 27 | 33460 | 53 | 1009    | Minneapolis    | 55412 | 50% - <80% | N/A | 0 | 27053100900 |
| 27 | 33460 | 53 | 1012    | Minneapolis    | 55418 | 20% - <50% | N/A | 0 | 27053101200 |
| 27 | 33460 | 53 | 1013    | Minneapolis    | 55411 | 80% - 100% | N/A | 0 | 27053101300 |
| 27 | 33460 | 53 | 1016    | Minneapolis    | 55411 | 80% - 100% | N/A | 0 | 27053101600 |
| 27 | 33460 | 53 | 1018    | Minneapolis    | 55418 | 20% - <50% | N/A | 0 | 27053101800 |
| 27 | 33460 | 53 | 1019    | Minneapolis    | 55418 | 20% - <50% | N/A | 0 | 27053101900 |
| 27 | 33460 | 53 | 1020    | Minneapolis    | 55411 | 50% - <80% | N/A | 0 | 27053102000 |
| 27 | 33460 | 53 | 1021    | Minneapolis    | 55411 | 80% - 100% | N/A | 0 | 27053102100 |
| 27 | 33460 | 53 | 1025    | Minneapolis    | 55413 | 20% - <50% | N/A | 0 | 27053102500 |
| 27 | 33460 | 53 | 1026    | Minneapolis    | 55413 | 20% - <50% | N/A | 0 | 27053102600 |
| 27 | 33460 | 53 | 1028    | Minneapolis    | 55411 | 80% - 100% | N/A | 0 | 27053102800 |
| 27 | 33460 | 53 | 1030    | Minneapolis    | 55413 | 20% - <50% | N/A | 0 | 27053103000 |
| 27 | 33460 | 53 | 1031    | Minneapolis    | 55413 | 20% - <50% | N/A | 0 | 27053103100 |
| 27 | 33460 | 53 | 1034    | Minneapolis    | 55411 | 80% - 100% | N/A | 0 | 27053103400 |
| 27 | 33460 | 53 | 1036    | Minneapolis    | 55413 | 10% - <20% | N/A | 0 | 27053103600 |
| 27 | 33460 | 53 | 1037    | Minneapolis    | 55414 | 20% - <50% | N/A | 0 | 27053103700 |
| 27 | 33460 | 53 | 1039    | Minneapolis    | 55414 | 20% - <50% | N/A | 0 | 27053103900 |
| 27 | 33460 | 53 | 1040.01 | Minneapolis    | 55414 | 20% - <50% | N/A | 0 | 27053104001 |
| 27 | 33460 | 53 | 1040.02 | Minneapolis    | 55413 | 20% - <50% | N/A | 0 | 27053104002 |
| 27 | 33460 | 53 | 1041    | Minneapolis    | 55405 | 50% - <80% | N/A | 0 | 27053104100 |
| 27 | 33460 | 53 | 1044    | Minneapolis    | 55402 | 20% - <50% | N/A | 0 | 27053104400 |
| 27 | 33460 | 53 | 1048.01 | Minneapolis    | 55454 | 80% - 100% | N/A | 0 | 27053104801 |
| 27 | 33460 | 53 | 1048.02 | Minneapolis    | 55454 | 50% - <80% | N/A | 0 | 27053104802 |
| 27 | 33460 | 53 | 1049.01 | Minneapolis    | 55455 | 20% - <50% | N/A | 0 | 27053104901 |
| 27 | 33460 | 53 | 1049.02 | Minneapolis    | 55414 | 50% - <80% | N/A | 0 | 27053104902 |
| 27 | 33460 | 53 | 1051    | Minneapolis    | 55405 | 10% - <20% | N/A | 0 | 27053105100 |
| 27 | 33460 | 53 | 1052.01 | Minneapolis    | 55403 | 20% - <50% | N/A | 0 | 27053105201 |
| 27 | 33460 | 53 | 1052.04 | Minneapolis    | 55403 | 20% - <50% | N/A | 0 | 27053105204 |
| 27 | 33460 | 53 | 1054    | Minneapolis    | 55404 | 20% - <50% | N/A | 0 | 27053105400 |
| 27 | 33460 | 53 | 1055    | Minneapolis    | 55403 | 10% - <20% | N/A | 0 | 27053105500 |
| 27 | 33460 | 53 | 1056    | Minneapolis    | 55403 | 20% - <50% | N/A | 0 | 27053105600 |
| 27 | 33460 | 53 | 1057    | Minneapolis    | 55403 | 20% - <50% | N/A | 0 | 27053105700 |
| 27 | 33460 | 53 | 1060    | Minneapolis    | 55404 | 80% - 100% | N/A | 0 | 27053106000 |
| 27 | 33460 | 53 | 1062    | Minneapolis    | 55404 | 50% - <80% | N/A | 0 | 27053106200 |
| 27 | 33460 | 53 | 1064    | Minneapolis    | 55406 | 50% - <80% | N/A | 0 | 27053106400 |
| 27 | 33460 | 53 | 1065    | Minneapolis    | 55416 | 10% - <20% | N/A | 0 | 27053106500 |

|    |       |    |         |                |       |            |     |   |             |
|----|-------|----|---------|----------------|-------|------------|-----|---|-------------|
| 27 | 33460 | 53 | 1066    | Minneapolis    | 55405 | 10% - <20% | N/A | 0 | 27053106600 |
| 27 | 33460 | 53 | 1067    | Minneapolis    | 55405 | 20% - <50% | N/A | 0 | 27053106700 |
| 27 | 33460 | 53 | 1069    | Minneapolis    | 55404 | 20% - <50% | N/A | 0 | 27053106900 |
| 27 | 33460 | 53 | 1070    | Minneapolis    | 55408 | 50% - <80% | N/A | 0 | 27053107000 |
| 27 | 33460 | 53 | 1074    | Minneapolis    | 55406 | 20% - <50% | N/A | 0 | 27053107400 |
| 27 | 33460 | 53 | 1075    | Minneapolis    | 55406 | 20% - <50% | N/A | 0 | 27053107500 |
| 27 | 33460 | 53 | 1076    | Minneapolis    | 55406 | 10% - <20% | N/A | 0 | 27053107600 |
| 27 | 33460 | 53 | 1080    | Minneapolis    | 55408 | 10% - <20% | N/A | 0 | 27053108000 |
| 27 | 33460 | 53 | 1086    | Minneapolis    | 55407 | 50% - <80% | N/A | 0 | 27053108600 |
| 27 | 33460 | 53 | 1087    | Minneapolis    | 55406 | 20% - <50% | N/A | 0 | 27053108700 |
| 27 | 33460 | 53 | 1088    | Minneapolis    | 55406 | 20% - <50% | N/A | 0 | 27053108800 |
| 27 | 33460 | 53 | 1089    | Minneapolis    | 55406 | 20% - <50% | N/A | 0 | 27053108900 |
| 27 | 33460 | 53 | 1090    | Minneapolis    | 55406 | 10% - <20% | N/A | 0 | 27053109000 |
| 27 | 33460 | 53 | 1091    | Minneapolis    | 55416 | 10% - <20% | N/A | 0 | 27053109100 |
| 27 | 33460 | 53 | 1092    | Minneapolis    | 55408 | 20% - <50% | N/A | 0 | 27053109200 |
| 27 | 33460 | 53 | 1093    | Minneapolis    | 55409 | 20% - <50% | N/A | 0 | 27053109300 |
| 27 | 33460 | 53 | 1094    | Minneapolis    | 55409 | 50% - <80% | N/A | 0 | 27053109400 |
| 27 | 33460 | 53 | 1097    | Minneapolis    | 55407 | 20% - <50% | N/A | 0 | 27053109700 |
| 27 | 33460 | 53 | 1098    | Minneapolis    | 55410 | 10% - <20% | N/A | 0 | 27053109800 |
| 27 | 33460 | 53 | 1099    | Minneapolis    | 55408 | 20% - <50% | N/A | 0 | 27053109900 |
| 27 | 33460 | 53 | 1100    | Minneapolis    | 55409 | 50% - <80% | N/A | 0 | 27053110000 |
| 27 | 33460 | 53 | 1101    | Minneapolis    | 55407 | 20% - <50% | N/A | 0 | 27053110100 |
| 27 | 33460 | 53 | 1102    | Minneapolis    | 55406 | 20% - <50% | N/A | 0 | 27053110200 |
| 27 | 33460 | 53 | 1104    | Minneapolis    | 55406 | 20% - <50% | N/A | 0 | 27053110400 |
| 27 | 33460 | 53 | 1105    | Minneapolis    | 55406 | 10% - <20% | N/A | 0 | 27053110500 |
| 27 | 33460 | 53 | 1108    | Minneapolis    | 55419 | 20% - <50% | N/A | 0 | 27053110800 |
| 27 | 33460 | 53 | 1109    | Minneapolis    | 55419 | 20% - <50% | N/A | 0 | 27053110900 |
| 27 | 33460 | 53 | 1111    | Minneapolis    | 55406 | 20% - <50% | N/A | 0 | 27053111100 |
| 27 | 33460 | 53 | 1112    | Minneapolis    | 55410 | 10% - <20% | N/A | 0 | 27053111200 |
| 27 | 33460 | 53 | 1113    | Minneapolis    | 55410 | 10% - <20% | N/A | 0 | 27053111300 |
| 27 | 33460 | 53 | 1114    | Minneapolis    | 55419 | 10% - <20% | N/A | 0 | 27053111400 |
| 27 | 33460 | 53 | 1115    | Minneapolis    | 55419 | 10% - <20% | N/A | 0 | 27053111500 |
| 27 | 33460 | 53 | 1116    | Minneapolis    | 55419 | 10% - <20% | N/A | 0 | 27053111600 |
| 27 | 33460 | 53 | 1225    | St. Louis Park | 55426 | 20% - <50% | N/A | 0 | 27053122500 |
| 27 | 33460 | 53 | 1226    | St. Louis Park | 55426 | 10% - <20% | N/A | 0 | 27053122600 |
| 27 | 33460 | 53 | 1255    | Bloomington    | 55420 | 20% - <50% | N/A | 0 | 27053125500 |
| 27 | 33460 | 53 | 1256    | Minneapolis    | 55414 | 20% - <50% | N/A | 0 | 27053125600 |
| 27 | 33460 | 53 | 1257    | Minneapolis    | 55411 | 80% - 100% | N/A | 0 | 27053125700 |
| 27 | 33460 | 53 | 1258    | Minneapolis    | 55407 | 50% - <80% | N/A | 0 | 27053125800 |
| 27 | 33460 | 53 | 1259    | Minneapolis    | 55407 | 80% - 100% | N/A | 0 | 27053125900 |
| 27 | 33460 | 53 | 1260    | Minneapolis    | 55407 | 50% - <80% | N/A | 0 | 27053126000 |
| 27 | 33460 | 53 | 1261.01 | Minneapolis    | 55401 | 20% - <50% | N/A | 0 | 27053126101 |
| 27 | 33460 | 53 | 1261.02 | Minneapolis    | 55415 | 20% - <50% | N/A | 0 | 27053126102 |
| 27 | 33460 | 53 | 1262.01 | Minneapolis    | 55401 | 20% - <50% | N/A | 0 | 27053126201 |
| 27 | 33460 | 53 | 1262.02 | Minneapolis    | 55401 | 10% - <20% | N/A | 0 | 27053126202 |
| 27 | 33460 | 53 | 1263    | Minneapolis    | 55411 | 50% - <80% | N/A | 0 | 27053126300 |
| 27 | 33460 | 53 | 9800    | Fort Snelling  | 55111 | 50% - <80% | N/A | 0 | 27053980000 |
| 27 | 33460 | 53 | 9801    | Fort Snelling  | 55111 | 20% - <50% | N/A | 0 | 27053980100 |

|    |       |     |         |               |       |            |     |   |             |
|----|-------|-----|---------|---------------|-------|------------|-----|---|-------------|
| 27 | 33460 | 59  | 1301    | Maple Ridge   | 55017 | <10%       | N/A | 0 | 27059130100 |
| 27 | 33460 | 59  | 1302    | Stanchfield   | 55080 | <10%       | N/A | 0 | 27059130200 |
| 27 | 33460 | 59  | 1303.02 | Cambridge     | 55008 | <10%       | N/A | 0 | 27059130302 |
| 27 | 33460 | 59  | 1303.03 | Cambridge     | 55008 | <10%       | N/A | 0 | 27059130303 |
| 27 | 33460 | 59  | 1303.04 | Cambridge     | 55008 | 10% - <20% | N/A | 0 | 27059130304 |
| 27 | 33460 | 59  | 1304    | North Branch  | 55056 | <10%       | N/A | 0 | 27059130400 |
| 27 | 33460 | 59  | 1305.01 | Bradford      | 55040 | <10%       | N/A | 0 | 27059130501 |
| 27 | 33460 | 59  | 1305.02 | Isanti        | 55040 | 10% - <20% | N/A | 0 | 27059130502 |
| 27 | 33460 | 59  | 1306    | Spencer Brook | 55371 | <10%       | N/A | 0 | 27059130600 |
| 27 | 33460 | 79  | 9501.01 | Lanesburgh    | 56071 | <10%       | N/A | 0 | 27079950101 |
| 27 | 33460 | 79  | 9501.02 | Derrynane     | 56057 | <10%       | N/A | 0 | 27079950102 |
| 27 | 33460 | 79  | 9502    | Ottawa        | 56058 | 10% - <20% | N/A | 0 | 27079950200 |
| 27 | 33460 | 79  | 9503    | Montgomery    | 56069 | 10% - <20% | N/A | 0 | 27079950300 |
| 27 | 33460 | 79  | 9504    | Waterville    | 56096 | <10%       | N/A | 0 | 27079950400 |
| 27 | 33460 | 79  | 9505    | Cordova       | 56057 | 20% - <50% | N/A | 0 | 27079950500 |
| 27 | 33460 | 79  | 9506    | Kasota        | 56082 | <10%       | N/A | 0 | 27079950600 |
| 27 | 33460 | 95  | 1704    | Borgholm      | 56353 | <10%       | N/A | 0 | 27095170400 |
| 27 | 33460 | 95  | 1705    | Milaca        | 56353 | <10%       | N/A | 0 | 27095170500 |
| 27 | 33460 | 95  | 1706    | Greenbush     | 55371 | <10%       | N/A | 0 | 27095170600 |
| 27 | 33460 | 95  | 1707    | Princeton     | 55371 | <10%       | N/A | 0 | 27095170700 |
| 27 | 33460 | 95  | 9701    | East Side     | 56342 | 10% - <20% | N/A | 0 | 27095970100 |
| 27 | 33460 | 95  | 9702    | Kathio        | 56359 | 20% - <50% | N/A | 0 | 27095970200 |
| 27 | 33460 | 95  | 9703    | Onamia        | 56359 | <10%       | N/A | 0 | 27095970300 |
| 27 | 33460 | 123 | 301     | St. Paul      | 55108 | 20% - <50% | N/A | 0 | 27123030100 |
| 27 | 33460 | 123 | 302.01  | St. Paul      | 55108 | 10% - <20% | N/A | 0 | 27123030201 |
| 27 | 33460 | 123 | 302.02  | St. Paul      | 55108 | 20% - <50% | N/A | 0 | 27123030202 |
| 27 | 33460 | 123 | 303     | St. Paul      | 55117 | 20% - <50% | N/A | 0 | 27123030300 |
| 27 | 33460 | 123 | 304     | St. Paul      | 55117 | 50% - <80% | N/A | 0 | 27123030400 |
| 27 | 33460 | 123 | 305     | St. Paul      | 55117 | 80% - 100% | N/A | 0 | 27123030500 |
| 27 | 33460 | 123 | 306.01  | St. Paul      | 55130 | 80% - 100% | N/A | 0 | 27123030601 |
| 27 | 33460 | 123 | 306.02  | St. Paul      | 55106 | 50% - <80% | N/A | 0 | 27123030602 |
| 27 | 33460 | 123 | 307.02  | St. Paul      | 55119 | 50% - <80% | N/A | 0 | 27123030702 |
| 27 | 33460 | 123 | 307.03  | St. Paul      | 55106 | 50% - <80% | N/A | 0 | 27123030703 |
| 27 | 33460 | 123 | 307.04  | St. Paul      | 55106 | 50% - <80% | N/A | 0 | 27123030704 |
| 27 | 33460 | 123 | 308     | St. Paul      | 55117 | 50% - <80% | N/A | 0 | 27123030800 |
| 27 | 33460 | 123 | 309     | St. Paul      | 55130 | 50% - <80% | N/A | 0 | 27123030900 |
| 27 | 33460 | 123 | 310     | St. Paul      | 55106 | 50% - <80% | N/A | 0 | 27123031000 |
| 27 | 33460 | 123 | 311     | St. Paul      | 55106 | 50% - <80% | N/A | 0 | 27123031100 |
| 27 | 33460 | 123 | 312     | St. Paul      | 55103 | 20% - <50% | N/A | 0 | 27123031200 |
| 27 | 33460 | 123 | 313     | St. Paul      | 55117 | 50% - <80% | N/A | 0 | 27123031300 |
| 27 | 33460 | 123 | 314     | St. Paul      | 55117 | 50% - <80% | N/A | 0 | 27123031400 |
| 27 | 33460 | 123 | 315     | St. Paul      | 55130 | 80% - 100% | N/A | 0 | 27123031500 |
| 27 | 33460 | 123 | 316     | St. Paul      | 55106 | 50% - <80% | N/A | 0 | 27123031600 |
| 27 | 33460 | 123 | 317.01  | St. Paul      | 55106 | 50% - <80% | N/A | 0 | 27123031701 |
| 27 | 33460 | 123 | 317.02  | St. Paul      | 55106 | 80% - 100% | N/A | 0 | 27123031702 |
| 27 | 33460 | 123 | 318.01  | St. Paul      | 55106 | 50% - <80% | N/A | 0 | 27123031801 |
| 27 | 33460 | 123 | 318.02  | St. Paul      | 55119 | 50% - <80% | N/A | 0 | 27123031802 |
| 27 | 33460 | 123 | 319     | St. Paul      | 55114 | 20% - <50% | N/A | 0 | 27123031900 |



|    |       |     |        |          |       |            |     |   |             |
|----|-------|-----|--------|----------|-------|------------|-----|---|-------------|
| 27 | 33460 | 123 | 320    | St. Paul | 55104 | 20% - <50% | N/A | 0 | 27123032000 |
| 27 | 33460 | 123 | 321    | St. Paul | 55104 | 20% - <50% | N/A | 0 | 27123032100 |
| 27 | 33460 | 123 | 322    | St. Paul | 55104 | 20% - <50% | N/A | 0 | 27123032200 |
| 27 | 33460 | 123 | 323    | St. Paul | 55104 | 20% - <50% | N/A | 0 | 27123032300 |
| 27 | 33460 | 123 | 324    | St. Paul | 55104 | 50% - <80% | N/A | 0 | 27123032400 |
| 27 | 33460 | 123 | 325    | St. Paul | 55104 | 50% - <80% | N/A | 0 | 27123032500 |
| 27 | 33460 | 123 | 326    | St. Paul | 55103 | 80% - 100% | N/A | 0 | 27123032600 |
| 27 | 33460 | 123 | 327    | St. Paul | 55103 | 80% - 100% | N/A | 0 | 27123032700 |
| 27 | 33460 | 123 | 330    | St. Paul | 55130 | 50% - <80% | N/A | 0 | 27123033000 |
| 27 | 33460 | 123 | 331    | St. Paul | 55106 | 50% - <80% | N/A | 0 | 27123033100 |
| 27 | 33460 | 123 | 332    | St. Paul | 55114 | 20% - <50% | N/A | 0 | 27123033200 |
| 27 | 33460 | 123 | 333    | St. Paul | 55104 | 20% - <50% | N/A | 0 | 27123033300 |
| 27 | 33460 | 123 | 334    | St. Paul | 55104 | 50% - <80% | N/A | 0 | 27123033400 |
| 27 | 33460 | 123 | 335    | St. Paul | 55104 | 80% - 100% | N/A | 0 | 27123033500 |
| 27 | 33460 | 123 | 336    | St. Paul | 55103 | 80% - 100% | N/A | 0 | 27123033600 |
| 27 | 33460 | 123 | 337    | St. Paul | 55103 | 80% - 100% | N/A | 0 | 27123033700 |
| 27 | 33460 | 123 | 338    | St. Paul | 55104 | 50% - <80% | N/A | 0 | 27123033800 |
| 27 | 33460 | 123 | 339    | St. Paul | 55104 | 50% - <80% | N/A | 0 | 27123033900 |
| 27 | 33460 | 123 | 340    | St. Paul | 55102 | 20% - <50% | N/A | 0 | 27123034000 |
| 27 | 33460 | 123 | 342.01 | St. Paul | 55101 | 20% - <50% | N/A | 0 | 27123034201 |
| 27 | 33460 | 123 | 342.03 | St. Paul | 55101 | 20% - <50% | N/A | 0 | 27123034203 |
| 27 | 33460 | 123 | 342.04 | St. Paul | 55101 | 20% - <50% | N/A | 0 | 27123034204 |
| 27 | 33460 | 123 | 344    | St. Paul | 55106 | 50% - <80% | N/A | 0 | 27123034400 |
| 27 | 33460 | 123 | 345    | St. Paul | 55106 | 50% - <80% | N/A | 0 | 27123034500 |
| 27 | 33460 | 123 | 346.01 | St. Paul | 55106 | 50% - <80% | N/A | 0 | 27123034601 |
| 27 | 33460 | 123 | 346.02 | St. Paul | 55106 | 50% - <80% | N/A | 0 | 27123034602 |
| 27 | 33460 | 123 | 347.01 | St. Paul | 55119 | 50% - <80% | N/A | 0 | 27123034701 |
| 27 | 33460 | 123 | 347.02 | St. Paul | 55119 | 50% - <80% | N/A | 0 | 27123034702 |
| 27 | 33460 | 123 | 349    | St. Paul | 55105 | 10% - <20% | N/A | 0 | 27123034900 |
| 27 | 33460 | 123 | 350    | St. Paul | 55104 | 10% - <20% | N/A | 0 | 27123035000 |
| 27 | 33460 | 123 | 351    | St. Paul | 55105 | 20% - <50% | N/A | 0 | 27123035100 |
| 27 | 33460 | 123 | 352    | St. Paul | 55105 | 10% - <20% | N/A | 0 | 27123035200 |
| 27 | 33460 | 123 | 353    | St. Paul | 55105 | 20% - <50% | N/A | 0 | 27123035300 |
| 27 | 33460 | 123 | 355    | St. Paul | 55102 | 10% - <20% | N/A | 0 | 27123035500 |
| 27 | 33460 | 123 | 357    | St. Paul | 55105 | 10% - <20% | N/A | 0 | 27123035700 |
| 27 | 33460 | 123 | 358    | St. Paul | 55102 | 10% - <20% | N/A | 0 | 27123035800 |
| 27 | 33460 | 123 | 359    | St. Paul | 55102 | 20% - <50% | N/A | 0 | 27123035900 |
| 27 | 33460 | 123 | 360    | St. Paul | 55102 | 20% - <50% | N/A | 0 | 27123036000 |
| 27 | 33460 | 123 | 361    | St. Paul | 55107 | 80% - 100% | N/A | 0 | 27123036100 |
| 27 | 33460 | 123 | 363    | St. Paul | 55105 | 10% - <20% | N/A | 0 | 27123036300 |
| 27 | 33460 | 123 | 364    | St. Paul | 55105 | 10% - <20% | N/A | 0 | 27123036400 |
| 27 | 33460 | 123 | 365    | St. Paul | 55105 | 10% - <20% | N/A | 0 | 27123036500 |
| 27 | 33460 | 123 | 366    | St. Paul | 55116 | 10% - <20% | N/A | 0 | 27123036600 |
| 27 | 33460 | 123 | 367    | St. Paul | 55102 | 20% - <50% | N/A | 0 | 27123036700 |
| 27 | 33460 | 123 | 368    | St. Paul | 55102 | 20% - <50% | N/A | 0 | 27123036800 |
| 27 | 33460 | 123 | 369    | St. Paul | 55102 | 20% - <50% | N/A | 0 | 27123036900 |
| 27 | 33460 | 123 | 370    | St. Paul | 55107 | 20% - <50% | N/A | 0 | 27123037000 |
| 27 | 33460 | 123 | 371    | St. Paul | 55107 | 50% - <80% | N/A | 0 | 27123037100 |

|    |       |     |        |                 |       |            |     |   |             |
|----|-------|-----|--------|-----------------|-------|------------|-----|---|-------------|
| 27 | 33460 | 123 | 372    | St. Paul        | 55107 | 50% - <80% | N/A | 0 | 27123037200 |
| 27 | 33460 | 123 | 374.02 | St. Paul        | 55119 | 50% - <80% | N/A | 0 | 27123037402 |
| 27 | 33460 | 123 | 374.03 | St. Paul        | 55119 | 50% - <80% | N/A | 0 | 27123037403 |
| 27 | 33460 | 123 | 375    | St. Paul        | 55116 | 20% - <50% | N/A | 0 | 27123037500 |
| 27 | 33460 | 123 | 376.01 | St. Paul        | 55116 | 20% - <50% | N/A | 0 | 27123037601 |
| 27 | 33460 | 123 | 376.03 | St. Paul        | 55116 | 50% - <80% | N/A | 0 | 27123037603 |
| 27 | 33460 | 123 | 376.04 | St. Paul        | 55116 | 20% - <50% | N/A | 0 | 27123037604 |
| 27 | 33460 | 123 | 401.01 | White Bear      | 55110 | 10% - <20% | N/A | 0 | 27123040101 |
| 27 | 33460 | 123 | 401.02 | White Bear      | 55110 | 10% - <20% | N/A | 0 | 27123040102 |
| 27 | 33460 | 123 | 402    | White Bear Lake | 55110 | <10%       | N/A | 0 | 27123040200 |
| 27 | 33460 | 123 | 403.01 | White Bear Lake | 55110 | 10% - <20% | N/A | 0 | 27123040301 |
| 27 | 33460 | 123 | 403.02 | White Bear Lake | 55110 | 10% - <20% | N/A | 0 | 27123040302 |
| 27 | 33460 | 123 | 404.01 | White Bear Lake | 55110 | 10% - <20% | N/A | 0 | 27123040401 |
| 27 | 33460 | 123 | 404.02 | White Bear Lake | 55110 | 20% - <50% | N/A | 0 | 27123040402 |
| 27 | 33460 | 123 | 405.02 | White Bear Lake | 55110 | 10% - <20% | N/A | 0 | 27123040502 |
| 27 | 33460 | 123 | 405.03 | White Bear      | 55110 | 10% - <20% | N/A | 0 | 27123040503 |
| 27 | 33460 | 123 | 405.04 | White Bear Lake | 55110 | 10% - <20% | N/A | 0 | 27123040504 |
| 27 | 33460 | 123 | 406.01 | North Oaks      | 55127 | 10% - <20% | N/A | 0 | 27123040601 |
| 27 | 33460 | 123 | 406.03 | Vadnais Heights | 55127 | 10% - <20% | N/A | 0 | 27123040603 |
| 27 | 33460 | 123 | 406.05 | Vadnais Heights | 55127 | 20% - <50% | N/A | 0 | 27123040605 |
| 27 | 33460 | 123 | 406.06 | Vadnais Heights | 55110 | 20% - <50% | N/A | 0 | 27123040606 |
| 27 | 33460 | 123 | 407.04 | Shoreview       | 55126 | 20% - <50% | N/A | 0 | 27123040704 |
| 27 | 33460 | 123 | 407.05 | Shoreview       | 55126 | 20% - <50% | N/A | 0 | 27123040705 |
| 27 | 33460 | 123 | 407.06 | Shoreview       | 55126 | 20% - <50% | N/A | 0 | 27123040706 |
| 27 | 33460 | 123 | 407.07 | Shoreview       | 55126 | 10% - <20% | N/A | 0 | 27123040707 |
| 27 | 33460 | 123 | 407.08 | Shoreview       | 55126 | 20% - <50% | N/A | 0 | 27123040708 |
| 27 | 33460 | 123 | 407.09 | Shoreview       | 55126 | 10% - <20% | N/A | 0 | 27123040709 |
| 27 | 33460 | 123 | 408.01 | Arden Hills     | 55112 | 20% - <50% | N/A | 0 | 27123040801 |
| 27 | 33460 | 123 | 408.04 | Arden Hills     | 55112 | 10% - <20% | N/A | 0 | 27123040804 |
| 27 | 33460 | 123 | 408.05 | Arden Hills     | 55112 | 10% - <20% | N/A | 0 | 27123040805 |
| 27 | 33460 | 123 | 409.01 | Mounds View     | 55112 | 20% - <50% | N/A | 0 | 27123040901 |
| 27 | 33460 | 123 | 409.02 | Mounds View     | 55112 | 20% - <50% | N/A | 0 | 27123040902 |
| 27 | 33460 | 123 | 410.01 | Mounds View     | 55112 | 20% - <50% | N/A | 0 | 27123041001 |
| 27 | 33460 | 123 | 410.02 | Mounds View     | 55112 | 20% - <50% | N/A | 0 | 27123041002 |
| 27 | 33460 | 123 | 411.03 | St. Anthony     | 55421 | 20% - <50% | N/A | 0 | 27123041103 |
| 27 | 33460 | 123 | 411.04 | New Brighton    | 55112 | 20% - <50% | N/A | 0 | 27123041104 |
| 27 | 33460 | 123 | 411.05 | New Brighton    | 55112 | 20% - <50% | N/A | 0 | 27123041105 |
| 27 | 33460 | 123 | 411.06 | New Brighton    | 55112 | 20% - <50% | N/A | 0 | 27123041106 |
| 27 | 33460 | 123 | 411.07 | New Brighton    | 55112 | 20% - <50% | N/A | 0 | 27123041107 |
| 27 | 33460 | 123 | 412    | New Brighton    | 55112 | 20% - <50% | N/A | 0 | 27123041200 |
| 27 | 33460 | 123 | 413.01 | Roseville       | 55113 | 20% - <50% | N/A | 0 | 27123041301 |
| 27 | 33460 | 123 | 413.02 | Roseville       | 55113 | 10% - <20% | N/A | 0 | 27123041302 |
| 27 | 33460 | 123 | 414    | Roseville       | 55113 | 20% - <50% | N/A | 0 | 27123041400 |
| 27 | 33460 | 123 | 415    | Roseville       | 55113 | 10% - <20% | N/A | 0 | 27123041500 |
| 27 | 33460 | 123 | 416.01 | Roseville       | 55113 | 20% - <50% | N/A | 0 | 27123041601 |
| 27 | 33460 | 123 | 416.02 | Roseville       | 55113 | 20% - <50% | N/A | 0 | 27123041602 |
| 27 | 33460 | 123 | 417    | Roseville       | 55113 | 20% - <50% | N/A | 0 | 27123041700 |
| 27 | 33460 | 123 | 418    | Roseville       | 55113 | 20% - <50% | N/A | 0 | 27123041800 |

|    |       |     |        |                |       |            |     |   |             |
|----|-------|-----|--------|----------------|-------|------------|-----|---|-------------|
| 27 | 33460 | 123 | 419    | Falcon Heights | 55113 | 20% - <50% | N/A | 0 | 27123041900 |
| 27 | 33460 | 123 | 420.01 | Falcon Heights | 55108 | 20% - <50% | N/A | 0 | 27123042001 |
| 27 | 33460 | 123 | 420.02 | Lauderdale     | 55113 | 20% - <50% | N/A | 0 | 27123042002 |
| 27 | 33460 | 123 | 421.01 | Little Canada  | 55117 | 20% - <50% | N/A | 0 | 27123042101 |
| 27 | 33460 | 123 | 421.02 | Little Canada  | 55117 | 20% - <50% | N/A | 0 | 27123042102 |
| 27 | 33460 | 123 | 422.01 | Maplewood      | 55117 | 50% - <80% | N/A | 0 | 27123042201 |
| 27 | 33460 | 123 | 422.02 | Maplewood      | 55117 | 20% - <50% | N/A | 0 | 27123042202 |
| 27 | 33460 | 123 | 423.01 | Maplewood      | 55109 | 20% - <50% | N/A | 0 | 27123042301 |
| 27 | 33460 | 123 | 423.02 | Maplewood      | 55109 | 20% - <50% | N/A | 0 | 27123042302 |
| 27 | 33460 | 123 | 424.01 | Maplewood      | 55109 | 20% - <50% | N/A | 0 | 27123042401 |
| 27 | 33460 | 123 | 424.02 | Maplewood      | 55109 | 20% - <50% | N/A | 0 | 27123042402 |
| 27 | 33460 | 123 | 425.01 | Maplewood      | 55119 | 20% - <50% | N/A | 0 | 27123042501 |
| 27 | 33460 | 123 | 425.03 | Maplewood      | 55119 | 20% - <50% | N/A | 0 | 27123042503 |
| 27 | 33460 | 123 | 425.04 | Maplewood      | 55119 | 20% - <50% | N/A | 0 | 27123042504 |
| 27 | 33460 | 123 | 426.01 | North St. Paul | 55109 | 20% - <50% | N/A | 0 | 27123042601 |
| 27 | 33460 | 123 | 426.02 | North St. Paul | 55109 | 20% - <50% | N/A | 0 | 27123042602 |
| 27 | 33460 | 123 | 427    | North St. Paul | 55109 | 20% - <50% | N/A | 0 | 27123042700 |
| 27 | 33460 | 123 | 428    | St. Paul       | 55103 | 80% - 100% | N/A | 0 | 27123042800 |
| 27 | 33460 | 123 | 429    | St. Paul       | 55104 | 20% - <50% | N/A | 0 | 27123042900 |
| 27 | 33460 | 123 | 430.01 | St. Paul       | 55116 | 10% - <20% | N/A | 0 | 27123043001 |
| 27 | 33460 | 123 | 430.02 | St. Paul       | 55104 | 10% - <20% | N/A | 0 | 27123043002 |
| 27 | 33460 | 123 | 9800   | St. Paul       | 55106 | N/A        | N/A | 0 | 27123980000 |
| 27 | 33460 | 139 | 801    | Savage         | 55378 | 20% - <50% | N/A | 0 | 27139080100 |
| 27 | 33460 | 139 | 802.01 | Savage         | 55378 | 10% - <20% | N/A | 0 | 27139080201 |
| 27 | 33460 | 139 | 802.02 | Savage         | 55378 | 20% - <50% | N/A | 0 | 27139080202 |
| 27 | 33460 | 139 | 802.04 | Savage         | 55378 | 20% - <50% | N/A | 0 | 27139080204 |
| 27 | 33460 | 139 | 802.06 | Savage         | 55378 | 20% - <50% | N/A | 0 | 27139080206 |
| 27 | 33460 | 139 | 802.07 | Savage         | 55378 | 10% - <20% | N/A | 0 | 27139080207 |
| 27 | 33460 | 139 | 802.08 | Savage         | 55378 | 50% - <80% | N/A | 0 | 27139080208 |
| 27 | 33460 | 139 | 802.09 | Savage         | 55378 | 20% - <50% | N/A | 0 | 27139080209 |
| 27 | 33460 | 139 | 803.03 | Shakopee       | 55379 | 20% - <50% | N/A | 0 | 27139080303 |
| 27 | 33460 | 139 | 803.04 | Shakopee       | 55379 | 20% - <50% | N/A | 0 | 27139080304 |
| 27 | 33460 | 139 | 803.05 | Shakopee       | 55379 | 20% - <50% | N/A | 0 | 27139080305 |
| 27 | 33460 | 139 | 803.06 | Shakopee       | 55379 | 20% - <50% | N/A | 0 | 27139080306 |
| 27 | 33460 | 139 | 803.07 | Shakopee       | 55379 | 20% - <50% | N/A | 0 | 27139080307 |
| 27 | 33460 | 139 | 804    | Shakopee       | 55379 | 20% - <50% | N/A | 0 | 27139080400 |
| 27 | 33460 | 139 | 805    | Shakopee       | 55379 | 20% - <50% | N/A | 0 | 27139080500 |
| 27 | 33460 | 139 | 806    | Shakopee       | 55379 | 20% - <50% | N/A | 0 | 27139080600 |
| 27 | 33460 | 139 | 807    | Jackson        | 55379 | 20% - <50% | N/A | 0 | 27139080700 |
| 27 | 33460 | 139 | 808.01 | Jordan         | 55352 | 10% - <20% | N/A | 0 | 27139080801 |
| 27 | 33460 | 139 | 808.02 | Sand Creek     | 55352 | <10%       | N/A | 0 | 27139080802 |
| 27 | 33460 | 139 | 809.03 | Prior Lake     | 55379 | 20% - <50% | N/A | 0 | 27139080903 |
| 27 | 33460 | 139 | 809.05 | Prior Lake     | 55372 | 10% - <20% | N/A | 0 | 27139080905 |
| 27 | 33460 | 139 | 809.06 | Prior Lake     | 55372 | 10% - <20% | N/A | 0 | 27139080906 |
| 27 | 33460 | 139 | 809.07 | Prior Lake     | 55372 | 10% - <20% | N/A | 0 | 27139080907 |
| 27 | 33460 | 139 | 809.08 | Spring Lake    | 55372 | 20% - <50% | N/A | 0 | 27139080908 |
| 27 | 33460 | 139 | 810.01 | Spring Lake    | 55372 | <10%       | N/A | 0 | 27139081001 |
| 27 | 33460 | 139 | 810.02 | Credit River   | 55372 | <10%       | N/A | 0 | 27139081002 |

|    |       |     |        |                  |       |            |     |   |             |
|----|-------|-----|--------|------------------|-------|------------|-----|---|-------------|
| 27 | 33460 | 139 | 811.01 | Cedar Lake       | 55088 | <10%       | N/A | 0 | 27139081101 |
| 27 | 33460 | 139 | 811.02 | New Market       | 55044 | <10%       | N/A | 0 | 27139081102 |
| 27 | 33460 | 139 | 811.03 | Elko             | 55020 | 10% - <20% | N/A | 0 | 27139081103 |
| 27 | 33460 | 139 | 812    | Helena           | 56071 | <10%       | N/A | 0 | 27139081200 |
| 27 | 33460 | 139 | 813.01 | Blakeley         | 56011 | 10% - <20% | N/A | 0 | 27139081301 |
| 27 | 33460 | 139 | 813.02 | Belle Plaine     | 56011 | 10% - <20% | N/A | 0 | 27139081302 |
| 27 | 33460 | 141 | 301.03 | Baldwin          | 55371 | <10%       | N/A | 0 | 27141030103 |
| 27 | 33460 | 141 | 301.04 | Baldwin          | 55398 | <10%       | N/A | 0 | 27141030104 |
| 27 | 33460 | 141 | 301.05 | Zimmerman        | 55398 | <10%       | N/A | 0 | 27141030105 |
| 27 | 33460 | 141 | 301.06 | Livonia          | 55330 | <10%       | N/A | 0 | 27141030106 |
| 27 | 33460 | 141 | 302.01 | Blue Hill        | 55398 | <10%       | N/A | 0 | 27141030201 |
| 27 | 33460 | 141 | 302.02 | Orrock           | 55309 | <10%       | N/A | 0 | 27141030202 |
| 27 | 33460 | 141 | 303.01 | Palmer           | 56304 | <10%       | N/A | 0 | 27141030301 |
| 27 | 33460 | 141 | 303.02 | Clear Lake       | 55319 | <10%       | N/A | 0 | 27141030302 |
| 27 | 33460 | 141 | 304.05 | Big Lake         | 55309 | <10%       | N/A | 0 | 27141030405 |
| 27 | 33460 | 141 | 304.06 | Big Lake         | 55309 | 10% - <20% | N/A | 0 | 27141030406 |
| 27 | 33460 | 141 | 304.07 | Becker           | 55308 | <10%       | N/A | 0 | 27141030407 |
| 27 | 33460 | 141 | 304.08 | Becker           | 55308 | <10%       | N/A | 0 | 27141030408 |
| 27 | 33460 | 141 | 304.09 | Big Lake         | 55309 | 10% - <20% | N/A | 0 | 27141030409 |
| 27 | 33460 | 141 | 304.1  | Big Lake         | 55309 | 10% - <20% | N/A | 0 | 27141030410 |
| 27 | 33460 | 141 | 305.03 | Elk River        | 55330 | 20% - <50% | N/A | 0 | 27141030503 |
| 27 | 33460 | 141 | 305.04 | Elk River        | 55330 | 10% - <20% | N/A | 0 | 27141030504 |
| 27 | 33460 | 141 | 305.05 | Elk River        | 55330 | 10% - <20% | N/A | 0 | 27141030505 |
| 27 | 33460 | 141 | 305.06 | Elk River        | 55330 | 10% - <20% | N/A | 0 | 27141030506 |
| 27 | 33460 | 141 | 315    | Haven            | 56304 | 20% - <50% | N/A | 0 | 27141031500 |
| 27 | 33460 | 163 | 701.03 | Forest Lake      | 55025 | 10% - <20% | N/A | 0 | 27163070103 |
| 27 | 33460 | 163 | 701.04 | Forest Lake      | 55025 | 10% - <20% | N/A | 0 | 27163070104 |
| 27 | 33460 | 163 | 701.05 | Forest Lake      | 55025 | <10%       | N/A | 0 | 27163070105 |
| 27 | 33460 | 163 | 701.07 | Forest Lake      | 55025 | 10% - <20% | N/A | 0 | 27163070107 |
| 27 | 33460 | 163 | 701.08 | Forest Lake      | 55025 | 10% - <20% | N/A | 0 | 27163070108 |
| 27 | 33460 | 163 | 702.04 | Hugo             | 55110 | 10% - <20% | N/A | 0 | 27163070204 |
| 27 | 33460 | 163 | 702.05 | New Scandia      | 55073 | <10%       | N/A | 0 | 27163070205 |
| 27 | 33460 | 163 | 702.06 | May              | 55047 | <10%       | N/A | 0 | 27163070206 |
| 27 | 33460 | 163 | 702.07 | Hugo             | 55038 | 10% - <20% | N/A | 0 | 27163070207 |
| 27 | 33460 | 163 | 702.08 | Hugo             | 55038 | 10% - <20% | N/A | 0 | 27163070208 |
| 27 | 33460 | 163 | 703.01 | Dellwood         | 55110 | <10%       | N/A | 0 | 27163070301 |
| 27 | 33460 | 163 | 703.03 | Mahtomedi        | 55115 | 10% - <20% | N/A | 0 | 27163070303 |
| 27 | 33460 | 163 | 703.04 | Mahtomedi        | 55115 | 10% - <20% | N/A | 0 | 27163070304 |
| 27 | 33460 | 163 | 704.03 | Grant            | 55082 | <10%       | N/A | 0 | 27163070403 |
| 27 | 33460 | 163 | 704.04 | Stillwater       | 55082 | <10%       | N/A | 0 | 27163070404 |
| 27 | 33460 | 163 | 704.05 | Lake Elmo        | 55042 | 10% - <20% | N/A | 0 | 27163070405 |
| 27 | 33460 | 163 | 704.06 | Lake Elmo        | 55042 | 20% - <50% | N/A | 0 | 27163070406 |
| 27 | 33460 | 163 | 705.01 | Stillwater       | 55082 | <10%       | N/A | 0 | 27163070501 |
| 27 | 33460 | 163 | 705.02 | Stillwater       | 55082 | <10%       | N/A | 0 | 27163070502 |
| 27 | 33460 | 163 | 706.02 | Stillwater       | 55082 | <10%       | N/A | 0 | 27163070602 |
| 27 | 33460 | 163 | 706.03 | Stillwater       | 55082 | 10% - <20% | N/A | 0 | 27163070603 |
| 27 | 33460 | 163 | 706.04 | Stillwater       | 55082 | 10% - <20% | N/A | 0 | 27163070604 |
| 27 | 33460 | 163 | 707.03 | Oak Park Heights | 55082 | 10% - <20% | N/A | 0 | 27163070703 |

|    |       |     |         |                  |       |            |     |   |             |
|----|-------|-----|---------|------------------|-------|------------|-----|---|-------------|
| 27 | 33460 | 163 | 707.04  | Bayport          | 55003 | 10% - <20% | N/A | 0 | 27163070704 |
| 27 | 33460 | 163 | 707.05  | West Lakeland    | 55082 | 10% - <20% | N/A | 0 | 27163070705 |
| 27 | 33460 | 163 | 707.06  | Baytown          | 55082 | <10%       | N/A | 0 | 27163070706 |
| 27 | 33460 | 163 | 708.01  | Bayport          | 55003 | 50% - <80% | N/A | 0 | 27163070801 |
| 27 | 33460 | 163 | 708.02  | Oak Park Heights | 55082 | 50% - <80% | N/A | 0 | 27163070802 |
| 27 | 33460 | 163 | 709.06  | Oakdale          | 55128 | 20% - <50% | N/A | 0 | 27163070906 |
| 27 | 33460 | 163 | 709.07  | Oakdale          | 55128 | 20% - <50% | N/A | 0 | 27163070907 |
| 27 | 33460 | 163 | 709.09  | Oakdale          | 55128 | 20% - <50% | N/A | 0 | 27163070909 |
| 27 | 33460 | 163 | 709.1   | Oakdale          | 55128 | 20% - <50% | N/A | 0 | 27163070910 |
| 27 | 33460 | 163 | 709.11  | Oakdale          | 55128 | 20% - <50% | N/A | 0 | 27163070911 |
| 27 | 33460 | 163 | 709.12  | Oakdale          | 55128 | 20% - <50% | N/A | 0 | 27163070912 |
| 27 | 33460 | 163 | 710.01  | Woodbury         | 55125 | 20% - <50% | N/A | 0 | 27163071001 |
| 27 | 33460 | 163 | 710.03  | Newport          | 55055 | 20% - <50% | N/A | 0 | 27163071003 |
| 27 | 33460 | 163 | 710.06  | Woodbury         | 55125 | 20% - <50% | N/A | 0 | 27163071006 |
| 27 | 33460 | 163 | 710.1   | Woodbury         | 55125 | 20% - <50% | N/A | 0 | 27163071010 |
| 27 | 33460 | 163 | 710.11  | Woodbury         | 55125 | 20% - <50% | N/A | 0 | 27163071011 |
| 27 | 33460 | 163 | 710.12  | Woodbury         | 55125 | 20% - <50% | N/A | 0 | 27163071012 |
| 27 | 33460 | 163 | 710.13  | Woodbury         | 55125 | 20% - <50% | N/A | 0 | 27163071013 |
| 27 | 33460 | 163 | 710.14  | Woodbury         | 55125 | 20% - <50% | N/A | 0 | 27163071014 |
| 27 | 33460 | 163 | 710.16  | Woodbury         | 55125 | 20% - <50% | N/A | 0 | 27163071016 |
| 27 | 33460 | 163 | 710.19  | Woodbury         | 55129 | 20% - <50% | N/A | 0 | 27163071019 |
| 27 | 33460 | 163 | 710.2   | Woodbury         | 55129 | 20% - <50% | N/A | 0 | 27163071020 |
| 27 | 33460 | 163 | 710.21  | Woodbury         | 55129 | 20% - <50% | N/A | 0 | 27163071021 |
| 27 | 33460 | 163 | 710.22  | Woodbury         | 55129 | 20% - <50% | N/A | 0 | 27163071022 |
| 27 | 33460 | 163 | 710.23  | Woodbury         | 55129 | 20% - <50% | N/A | 0 | 27163071023 |
| 27 | 33460 | 163 | 710.24  | Woodbury         | 55125 | 20% - <50% | N/A | 0 | 27163071024 |
| 27 | 33460 | 163 | 710.25  | Woodbury         | 55125 | 20% - <50% | N/A | 0 | 27163071025 |
| 27 | 33460 | 163 | 711.01  | Lakeland         | 55043 | <10%       | N/A | 0 | 27163071101 |
| 27 | 33460 | 163 | 711.02  | Denmark          | 55033 | 10% - <20% | N/A | 0 | 27163071102 |
| 27 | 33460 | 163 | 712.07  | Cottage Grove    | 55016 | 20% - <50% | N/A | 0 | 27163071207 |
| 27 | 33460 | 163 | 712.08  | Cottage Grove    | 55016 | 20% - <50% | N/A | 0 | 27163071208 |
| 27 | 33460 | 163 | 712.09  | Cottage Grove    | 55016 | 20% - <50% | N/A | 0 | 27163071209 |
| 27 | 33460 | 163 | 712.1   | Cottage Grove    | 55016 | 20% - <50% | N/A | 0 | 27163071210 |
| 27 | 33460 | 163 | 712.11  | Cottage Grove    | 55016 | 20% - <50% | N/A | 0 | 27163071211 |
| 27 | 33460 | 163 | 713     | St. Paul Park    | 55071 | 20% - <50% | N/A | 0 | 27163071300 |
| 27 | 33460 | 163 | 714     | Cottage Grove    | 55016 | 20% - <50% | N/A | 0 | 27163071400 |
| 27 | 33460 | 171 | 1001.01 | Otsego           | 55330 | 10% - <20% | N/A | 0 | 27171100101 |
| 27 | 33460 | 171 | 1001.02 | Otsego           | 55301 | 10% - <20% | N/A | 0 | 27171100102 |
| 27 | 33460 | 171 | 1002.02 | Monticello       | 55362 | <10%       | N/A | 0 | 27171100202 |
| 27 | 33460 | 171 | 1002.03 | Monticello       | 55362 | 10% - <20% | N/A | 0 | 27171100203 |
| 27 | 33460 | 171 | 1002.05 | Monticello       | 55362 | 10% - <20% | N/A | 0 | 27171100205 |
| 27 | 33460 | 171 | 1002.06 | Monticello       | 55362 | 10% - <20% | N/A | 0 | 27171100206 |
| 27 | 33460 | 171 | 1003    | Silver Creek     | 55320 | <10%       | N/A | 0 | 27171100300 |
| 27 | 33460 | 171 | 1004.01 | Corinna          | 55358 | <10%       | N/A | 0 | 27171100401 |
| 27 | 33460 | 171 | 1004.02 | Corinna          | 55302 | <10%       | N/A | 0 | 27171100402 |
| 27 | 33460 | 171 | 1005    | French Lake      | 55302 | <10%       | N/A | 0 | 27171100500 |
| 27 | 33460 | 171 | 1007.01 | Buffalo          | 55313 | <10%       | N/A | 0 | 27171100701 |
| 27 | 33460 | 171 | 1007.04 | Buffalo          | 55313 | 10% - <20% | N/A | 0 | 27171100704 |

|    |       |     |         |              |       |            |     |   |             |
|----|-------|-----|---------|--------------|-------|------------|-----|---|-------------|
| 27 | 33460 | 171 | 1007.05 | Buffalo      | 55313 | <10%       | N/A | 0 | 27171100705 |
| 27 | 33460 | 171 | 1007.06 | Maple Lake   | 55313 | <10%       | N/A | 0 | 27171100706 |
| 27 | 33460 | 171 | 1007.07 | Maple Lake   | 55358 | <10%       | N/A | 0 | 27171100707 |
| 27 | 33460 | 171 | 1008.03 | Frankfort    | 55376 | 10% - <20% | N/A | 0 | 27171100803 |
| 27 | 33460 | 171 | 1008.04 | Frankfort    | 55376 | 10% - <20% | N/A | 0 | 27171100804 |
| 27 | 33460 | 171 | 1008.05 | Hanover      | 55341 | 10% - <20% | N/A | 0 | 27171100805 |
| 27 | 33460 | 171 | 1008.06 | Frankfort    | 55376 | 10% - <20% | N/A | 0 | 27171100806 |
| 27 | 33460 | 171 | 1008.07 | Frankfort    | 55376 | 10% - <20% | N/A | 0 | 27171100807 |
| 27 | 33460 | 171 | 1009    | Rockford     | 55313 | <10%       | N/A | 0 | 27171100900 |
| 27 | 33460 | 171 | 1010.01 | Franklin     | 55328 | <10%       | N/A | 0 | 27171101001 |
| 27 | 33460 | 171 | 1010.02 | Franklin     | 55328 | 10% - <20% | N/A | 0 | 27171101002 |
| 27 | 33460 | 171 | 1011.01 | Marysville   | 55390 | 10% - <20% | N/A | 0 | 27171101101 |
| 27 | 33460 | 171 | 1011.02 | Woodland     | 55363 | <10%       | N/A | 0 | 27171101102 |
| 27 | 33460 | 171 | 1012    | Middleville  | 55349 | <10%       | N/A | 0 | 27171101200 |
| 27 | 33460 | 171 | 1013    | Cokato       | 55321 | <10%       | N/A | 0 | 27171101300 |
| 55 | 33460 | 93  | 9601    | Spring Lake  | 54740 | <10%       | N/A | 0 | 55093960100 |
| 55 | 33460 | 93  | 9602    | Martell      | 54022 | <10%       | N/A | 0 | 55093960200 |
| 55 | 33460 | 93  | 9603    | River Falls  | 54022 | 10% - <20% | N/A | 0 | 55093960300 |
| 55 | 33460 | 93  | 9604    | River Falls  | 54022 | 10% - <20% | N/A | 0 | 55093960400 |
| 55 | 33460 | 93  | 9605    | Clifton      | 54021 | <10%       | N/A | 0 | 55093960500 |
| 55 | 33460 | 93  | 9606    | Trenton      | 54011 | <10%       | N/A | 0 | 55093960600 |
| 55 | 33460 | 93  | 9607    | Ellsworth    | 54011 | <10%       | N/A | 0 | 55093960700 |
| 55 | 33460 | 93  | 9608    | Salem        | 54750 | <10%       | N/A | 0 | 55093960800 |
| 55 | 33460 | 109 | 1201    | Hudson       | 54016 | <10%       | N/A | 0 | 55109120100 |
| 55 | 33460 | 109 | 1202.01 | Hudson       | 54016 | <10%       | N/A | 0 | 55109120201 |
| 55 | 33460 | 109 | 1202.02 | Hudson       | 54016 | <10%       | N/A | 0 | 55109120202 |
| 55 | 33460 | 109 | 1203    | Hudson       | 54016 | <10%       | N/A | 0 | 55109120300 |
| 55 | 33460 | 109 | 1204.01 | Somerset     | 54025 | <10%       | N/A | 0 | 55109120401 |
| 55 | 33460 | 109 | 1204.02 | St. Joseph   | 54016 | <10%       | N/A | 0 | 55109120402 |
| 55 | 33460 | 109 | 1205.01 | Richmond     | 54017 | 10% - <20% | N/A | 0 | 55109120501 |
| 55 | 33460 | 109 | 1205.02 | Stanton      | 54017 | <10%       | N/A | 0 | 55109120502 |
| 55 | 33460 | 109 | 1206.01 | Erin Prairie | 54017 | <10%       | N/A | 0 | 55109120601 |
| 55 | 33460 | 109 | 1206.02 | Stanton      | 54017 | <10%       | N/A | 0 | 55109120602 |
| 55 | 33460 | 109 | 1207    | Glenwood     | 54013 | <10%       | N/A | 0 | 55109120700 |
| 55 | 33460 | 109 | 1208.01 | Baldwin      | 54002 | 10% - <20% | N/A | 0 | 55109120801 |
| 55 | 33460 | 109 | 1208.02 | Baldwin      | 54002 | <10%       | N/A | 0 | 55109120802 |
| 55 | 33460 | 109 | 1209.01 | Kinnickinnic | 54022 | <10%       | N/A | 0 | 55109120901 |
| 55 | 33460 | 109 | 1209.04 | Kinnickinnic | 54022 | <10%       | N/A | 0 | 55109120904 |
| 55 | 33460 | 109 | 1209.05 | Hudson       | 54016 | 10% - <20% | N/A | 0 | 55109120905 |
| 55 | 33460 | 109 | 1209.06 | Troy         | 54016 | <10%       | N/A | 0 | 55109120906 |
| 55 | 33460 | 109 | 1210    | Hammond      | 54015 | <10%       | N/A | 0 | 55109121000 |

Exhibit D: Public Comments

| <b>Public Written Comments</b> |                   |               |
|--------------------------------|-------------------|---------------|
| Post Date                      | Comment Period    | # of Comments |
| 4/1/2022                       | 2021              | 0             |
| 4/1/2023                       | 2022              | 0             |
| 4/1/2024                       | 2023              | 0             |
| 3/31/2024                      | 10/31/23-12/31/23 | 0             |
| 6/30/2024                      | 1/1/24-3/31/24    | 0             |
| 9/30/2024                      | 4/1/24-6/30/24    |               |
| 12/31/2024                     | 7/1/24-10/31/24   |               |